



Innsbrook Traditional & Loft Contemporary Direct-Vent Fireplace Insert Systems

Innsbrook 35,000 Btu Direct-Vent Fireplace Insert shown with optional Lancaster Decorative Front in Matte Black.



White Mountain Hearth – The Pinnacle of Efficiency



innsbrook & loft

Innsbrook Traditional & Loft Contemporary

A Direct-Vent Fireplace Insert turns your existing wood-burning fireplace into an efficient gas-fired heat source.

A wood-burning fireplace sends more than half of its heat up the flue, creating negative pressure in your home, which draws in outside air through gaps in doors and windows that actually makes your home colder. A wood-fire can also create ash and fumes that dirty your home and aggravate your allergies.

Direct-Vent Fireplace Inserts are classified as zone heating appliances. Zone heating is inherently more efficient than your existing wood-burning fireplace or your central furnace. Unlike a central furnace, which wastes 20 to 30 percent of the heat energy through ductwork losses and sends much of the remaining heat to unoccupied rooms, zone heating creates and transmits the heat directly into the room. This lets you turn down your whole-house thermostat and use your fireplace insert to efficiently warm the room you use most.

Our Direct-Vent insert uses readily available 3-inch flexible co-linear vent pipes. One draws air from outside your home, and the other sends flue products directly outdoors. The flexible metal venting allows the insert to install easily in a site-built or manufactured fireplace.

Standard Features

We offer our traditional Innsbrook Direct-Vent Inserts in three sizes – small, medium, and large – to fit most wood-burning fireplaces. Choose Millivolt ignition with standing pilot to provide heat, even in the absence of electric power, or our Green Earth Preferred Intermittent Pilot, which eliminates the standing pilot to save even more energy. IP systems can operate with a standing pilot during power outages.



Our Innsbrook Direct-Vent inserts feature Banded Brick Liners and hand-painted ceramic fiber logs, nestled atop the variable flame height burner, to create an exceptionally attractive traditional fireplace. With inputs of 25,000 Btu, 33,000 Btu, and 35,000 Btu, the Direct-Vent insert's unique stainless steel Slope Glaze Flair Burner produces natural flickering flames that dance and delight – warming your heart as it warms your soles.

Awaken your inner artist with a Loft Series Contemporary Direct-Vent Insert – in small (20,000 Btu) or medium (27,000 Btu). Choose Millivolt ignition or Intermittent Pilot. The black porcelain lining inside the Loft insert reflects the mesmerizing flame from the contemporary linear burner to create depth and visual interest from any angle.

Surrounds available in Steel and Cast Iron



Options & Accessories



Loft 27,000 Btu Direct-Vent Fireplace Insert shown with Polished Black Decorative Glass and Matte Black metal surround.

Options & Accessories

Your new direct-vent insert will require a surround, decorative front, or decorative frame and doors.

Insert surrounds come in three styles. For Innsbrook traditional models, choose an old-world style three-piece cast iron surround with rich details at the corners, keystone, and columns, or one of our steel surrounds with either 6-inch top and side panels or 6-inch top and 3-inch side panels. For installations where your Innsbrook insert does not rest on the hearth, we offer a 1 5/16-inch bottom cover to complete the surround.

Decorative Fronts are available in six different styles and a variety of finishes. Each front attaches in minutes to the 1-piece metal backer (available in Matte Black) and includes fireplace screens. Screens protect you and your family from inadvertently touching the hot glass – but without detracting from the overall view of the fireplace.

Decorative doors add visual interest and old-world charm to any fireplace. The frames and door sets install in minutes to transform the look of the insert. Doors are available in Matte Black, Hammered Pewter, and Stainless Steel.

To cover larger hearth openings, install the optional shroud. At 48 inches wide and just under 38 inches tall, it provides a clean transition between the surround and the existing fireplace. The 2-inch bottom cover completes the shroud.



Innsbrook 25,000 Btu Fireplace Insert with 6 x 3 Metal Surround and Universal Shroud.



Loft Series insert with surround in Matte Black and Stainless Steel.



Decorative Glass for the Loft Series fireplace can be placed on the floor of the firebox and is available in Polished Black, Clear Frost, and Blue Clear.

For the Loft DV Insert, choose a matching contemporary surround in all black or in black and stainless steel. The bold stainless steel panels top and bottom accentuate the clean horizontal look of the Loft Insert.

Complete your Loft insert with decorative glass – available in Black Polished, Blue Clear, and Clear Frost. Additional colors are available through your local hearth dealer.

Insert Surrounds



6 x 3 Metal Surround



6 x 6 Metal Surround



Cast Iron Surround



1-piece Metal Backer (used as surround)

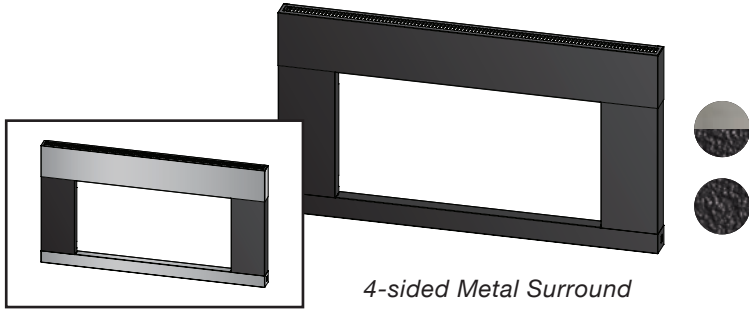


6 x 3 Metal Surround with Universal Shroud

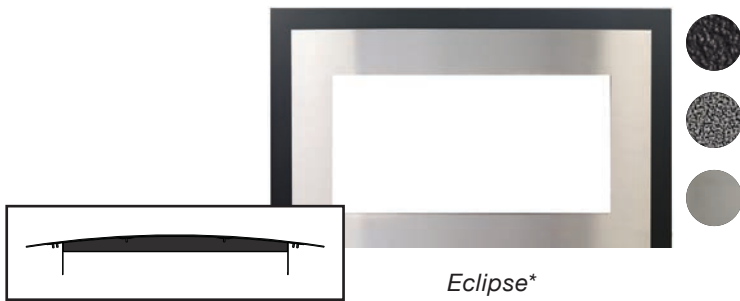
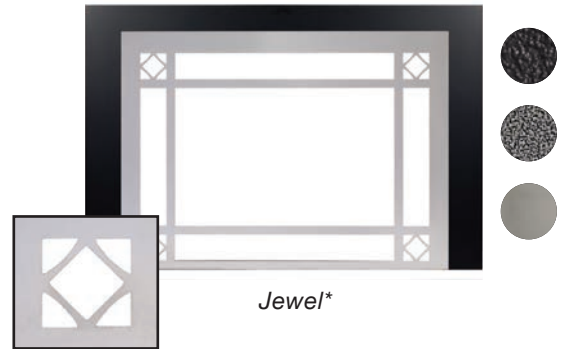
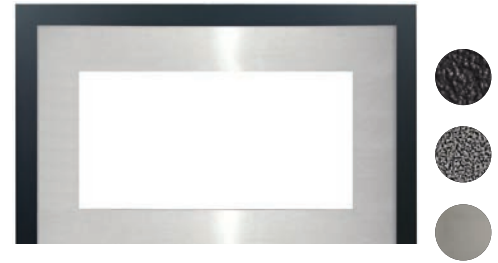


Insert Surrounds Available in Matte Black Only

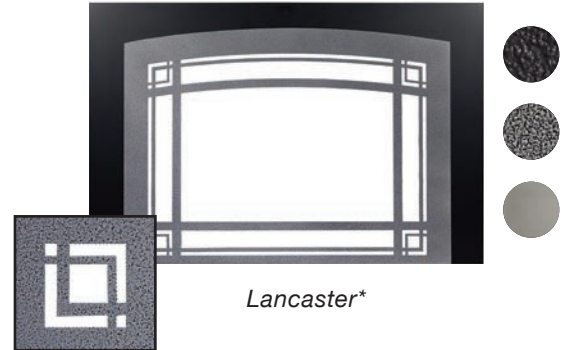
Decorative Fronts



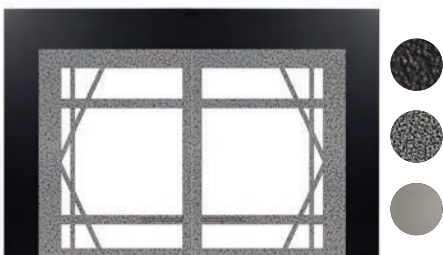
Stainless Steel & Flat Black Finish



Eclipse (Top View)



Decorative Doors



**Requires 1-piece Metal Backer for Installation. Fronts and Doors include protective screen (not shown).*

Control Options for Direct-Vent Inserts

Lighting and managing a wood fire takes time and work – and more than a little patience to get it right. Your Innsbrook or Loft fireplace insert lights at the flick of a switch to produce consistent, reliable heat, even when electric power fails. Add the convenience of an optional thermostat, wireless wall thermostat, remote control, or thermostat remote control, and enjoy all the comfort of a warm cozy fire without the mess and hassle.



*FREC
Electric Remote Control
Millivolt or IP*



*FRBC
Remote
Millivolt Only*



*FRBTC
Thermostat Remote Control
Millivolt or IP*



*FRBTP
Programmable Remote Control
Millivolt or IP*



*FWS
Wall Switch
Millivolt or IP*



*TRW Wireless
Wall Thermostat
Millivolt or IP*



*TMV
Wall Thermostat
Millivolt or IP*

Decorative Louvers for Traditional Direct-Vent Inserts

With four styles and four finishes from which to choose, our decorative louvers help create the perfect look for your Innsbrook traditional fireplace insert.

Finishes include our rich matte black, contemporary hammered pewter, and modern stainless steel.

In addition to the traditional slat louvers, we offer a graceful Arched pattern, a geometric Mission pattern, and an elegant Leaf pattern.

All of our decorative louvers install in seconds without tools.



Decorative Louver Arch



Decorative Louver Leaf

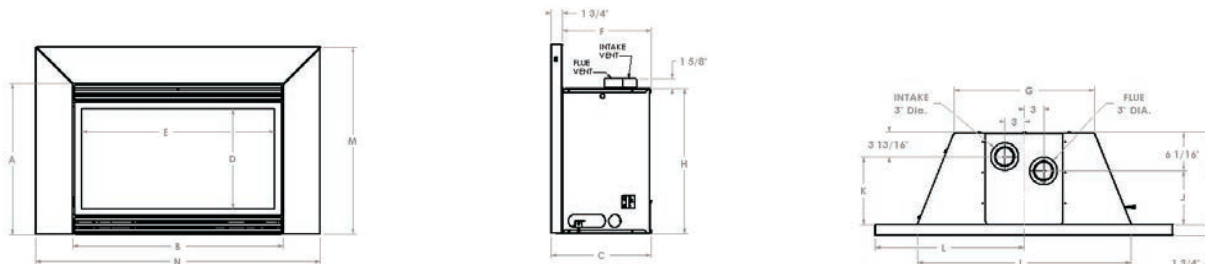


Decorative Louver Mission

Traditional Direct-Vent Insert Dimensions

Model	A	B	C	D	E	F	G	H	I	J	K	L	M	N
DV25IN	19 3/4	28	14 1/2	11 1/8	25 1/4	12 3/4	17	18 5/16	27	6 3/4	9	20	25 5/8	40
DV33IN	22 3/4	31	16	14 1/8	28 1/4	14 1/4	18 3/4	21 5/16	30	8 1/4	10 1/2	21 1/2	28 5/8	43
DV35IN	24 3/4	34	16	16 1/8	31 1/4	14 1/4	21 3/4	23 5/16	33	8 1/4	10 1/2	23	30 5/8	46

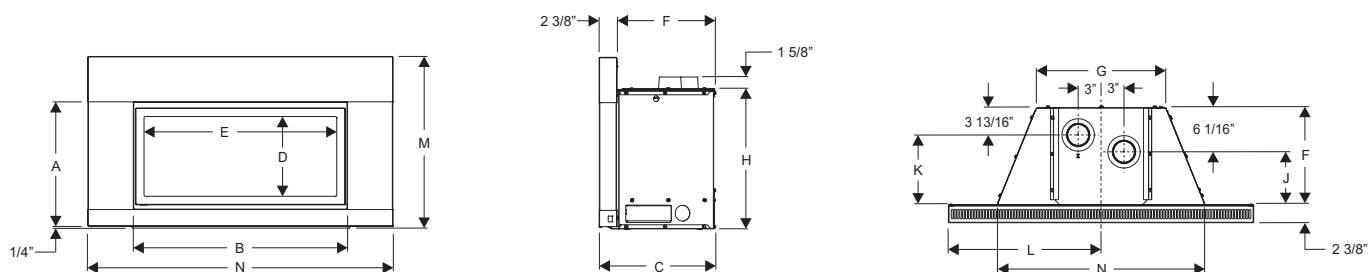
* Note: Illustrations shown are based on Direct-Vent models with 6 x 6-inch metal surround.



Loft Direct-Vent Insert Dimensions

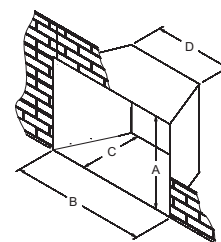
Model	A	B	C	D	E	F	G	H	I	J	K	L	M	N
DVL25IN	16 1/4	28	15 1/4	10 7/16	25 1/4	12 3/4	17	18 5/16	27	6 11/16	8 13/16	20	22 1/2	40
DVL33IN	19 1/4	31	16 3/4	13 7/16	28 1/4	14 1/4	18 3/4	21 5/16	30	8 3/16	10 7/16	21 1/2	25 1/2	43

* Note: Illustrations shown are based on Direct-Vent models with 6 x 6 x 2-inch metal surround.



Minimum Fireplace Opening Dimensions

Model	A	B	C	D
DV25IN	18 3/8	27 1/2	12 3/4	17 1/4
DV33IN	21 3/8	30 1/2	14 1/4	19
DV35IN	23 3/8	33 1/2	14 1/4	22
DVL25IN	18 3/8	27 1/2	12 3/4	17 1/4
DVL33IN	21 3/8	30 1/2	14 1/4	19



* Note: On Direct-Vent installations, if the fireplace lintel is wider than 8" (203 mm), the height of the fireplace opening must be increased a few inches to allow for a gradual offset in the exhaust and/or intake vent pipes.

Gas Inlet		Warranty
Type of Gas (State on Order)	Natural or LP	All vented parts carry a 3-year limited warranty. Remote Controls carry a 1-year limited parts warranty.
Iron Pipe Size (N.P.T.)	1/2 inch	
Ignition Systems	Standing Pilot/Piezo or IP (DVL)	

Empire Comfort Systems Inc. has manufactured safe, reliable gas-fired decorative appliances and heating systems since 1932. We take pride in our reputation for quality products, backed by the best sales, service, and distribution network in this industry. These fireplaces combine proven technologies with exceptional artistry and craftsmanship to enhance the ambiance of any home.

Member of the following industry associations:



The Empire Comfort Systems and White Mountain Hearth names and logos are registered U.S. trademarks.



SINCE 1932

Empire Comfort Systems Inc.
918 Freeburg Ave.
Belleville, IL 62220-2623
info@empirecomfort.com

WMH-00769 04/05/13