

GRAND MERIDIAN

Vent-Free
Wood Burning



100% masonry fireplace at half the cost of traditional masonry fireplaces. The Grand Meridian allows you to realize your dream of a fireplace in your favorite spot and provide you with years of treasured memories.



www.FMIPRODUCTS.com

Modular Masonry Fireplace Systems

Today's most discriminating homeowners will settle for nothing less than a real masonry fireplace. But they soon find that the level of craftsmanship to properly build a site-built fireplace is extremely expensive, and has all but disappeared. Due to their weight and method of construction, masonry fireplaces are also very limited in where they can actually be built.

The solution to this dilemma is the new Grand Meridian from FMI. The Grand Meridian is a true, 100% masonry fireplace, but with only half the weight and half the cost of traditional masonry fireplaces. This modular masonry system can easily be added to your master bedroom, upstairs retreat or even your outdoor patio, without any special engineering or major building reinforcement. The Grand Meridian allows you to realize your dream of a fireplace in your favorite spot and provide you with years of treasured memories.

Homeowner Highlights

- Lightweight construction with multiple firebox sizes available
- Indoor/Outdoor, wood burning, natural and propane gas systems
- Approved for multi-story combustible wood floor installations
- Superior thermal efficiencies, with the highest resistance strength at 28 days
- Complies with UL 127 & UL 103 chimney component standards
- 10-year limited warranty

Product Offering

Our Grand Meridian is offered as a traditional wood burning fireplace that can also accept an ANSI Z21.60 approved gas log set. We also offer this exceptional fireplace in a vent-free gas version designed for approved, indoor applications—where allowed—or for outdoor applications using a clean burning gas log set. For those looking for more design creativity, both the wood burning and gas versions are available as a 2-sided, see-thru fireplace.

Easy, no mess installation means lower costs and faster completion time!



1. Installing base and first course



2. Starting the smoke chamber



3. Easy to build smoke dome



4. Finishing with the dome top



5. Finished Meridian in under 2 hours



Large 50" Grand Meridian Masonry Fireplace shown with XL Southern Comfort / Magniflame Log Set & MFEB Ember Bed

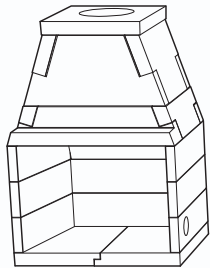
Optional Accessories

- Optional brick panels are available in all standard sizes in Stacked & Split Herringbone patterns.
- The Masonry Chimney is available for indoor and outdoor installations in 14".
- The optional arch is available in our 49" size and can be adjusted down to 44" and 39" sizes.
- The Grand Meridian Fire Ring is perfect for any outdoor patio.

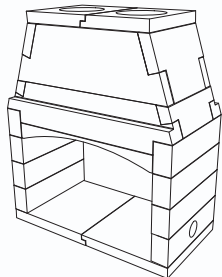
GRAND MERIDIAN



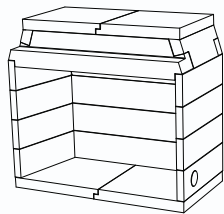
**Grand Meridian
Firebox**



**Grand Meridian
See-Thru**



**Grand Meridian
Vent-Free**



Fire Ring



14" Masonry Chimney

Modular Masonry

Fireplace Systems

Grand Meridian Wood Burning Firebox Kits (UL127)

MODEL	DESCRIPTION
MM63	63" Firebox Kit - Use dual 12" FMI Chimney- Inc. (2) MM525
MM49	49" Firebox Kit - Use 12" FMI Chimney - Inc. (1) MM525
MM44	44" Firebox Kit - Use 12" FMI Chimney - Inc. (1) MM525
MM39	39" Firebox Kit - Use 12" FMI Chimney - Inc. (1) MM525
MMST43	43" See-Thru Firebox Kit - Use dual 12" FMI Chimney - Inc. (1) MM525
MM33	33" Firebox Kit - Use 12" FMI Chimney - Inc. (1) MM525

Grand Meridian Universal Gas Vent-Free Firebox Kits

MODEL	DESCRIPTION
MM49VF	49" Vent-Free Firebox Kit - Use approved VF log set - Inc. (1) MM525
MM44VF	44" Vent-Free Firebox Kit - Use approved VF log set - Inc. (1) MM525
MM39VF	39" Vent-Free Firebox Kit - Use approved VF log set - Inc. (1) MM525

Grand Meridian Fire Ring

MODEL	DESCRIPTION
MM3FR	Three Tier Masonry 48" Fire Ring with Cap
MM2FR	Three Tier Masonry 48" Fire Ring with Cap
MMFRBNB	Natural Gas Fire Ring Burner System with Lava Rock - Black
MMFRBPB	Propane Gas Fire Ring Burner System with Lava Rock - Black
MMFRBNS	Natural Gas Fire Ring Burner System with Lava Rock - Stainless Steel
MMFRBPS	Propane Gas Fire Ring Burner System with Lava Rock - Stainless Steel

Grand Meridian Accessories

MODEL	DESCRIPTION
MM12AP	Damper/Anchor Plate Kit for 12" Pipe Systems (use FMI pipe) (Includes Insulation Blanket & Concrete Screws)
MM4AK	4" Air Kit with 3' Flexible Duct, Hood & Hardware
MM4STAK	4" Air Kit with 3' Flexible Duct, Hood & Hardware for MMST43
MM525	50 lbs. Bucket Dry Mortar
MMB63	8" Structural Metal Base Kit for 63" Grand Meridian*
MMB49	6" Structural Metal Base Kit for 49" Grand Meridian*
MMB44	6" Structural Metal Base Kit for 44" Grand Meridian*
MMB43	8" Structural Metal Base Kit for 43" Grand Meridian*
MMB39	6" Structural Metal Base Kit for 39" Grand Meridian*
MMB33	6" Structural Metal Base Kit for 33" Grand Meridian*
MM115	Seismic Strap Kit - (Includes Bracket & Hardware)
MMARC	Masonry Arch - Fits up to MFP49
MMG3	36" Grate with Andirons (fits MM33 & MM39)
MMG4	42" Grate with Andirons (fits MM44)
MMG5	50" Grate with Andirons (fits MM49)
MMG6	60" Grate with Andirons (fits MM63)
MMGST	42" See-Thru Grate with Andirons (fits MMST43)
MMS1	Large Screen Assembly - fits 49 & 63 (Inc. Screen, Rod & Hardware)
MMS2	Medium Screen Assembly - fits 39 & 44 (Inc. Screen, Rod & Hardware)
MMS3	Small Screen Assembly - fits 33 (Inc. Screen, Rod & Hardware)
MMST	See-Thru Screen Assembly

*Metal Base Kit Includes: Base, Insulation Blanket, Ember Protector Strips & Hardware

Masonry Chimney System

MCLS814K	Masonry Chimney - 14" Dia. 12 Sections, 8" Each (8' total)
MCLS814P	Masonry Chimney - 14" Dia. 6 Sections, 8" Each (4' total)
MCL814	Masonry Chimney - Inner Liner - 14" Diameter
MCS814	Masonry Chimney - Outer Liner - 14" Diameter
MCL414	Masonry Chimney - Inner Liner - 14" Diameter, 4" High (starter)
MCSBL814	Masonry Chimney - 14" Diameter Brick Ledge
MCSOS814	Masonry Chimney - 14" Diameter Offset Elbow Section
MC14AP	Anchor Plate / Damper for Masonry Chimney



Herringbone Brick



Running Bond Brick

Grand Meridian Accessories	
MODEL	DESCRIPTION
Brick Panels	
MM63SHBL	Brick Panels - Herringbone for 63" Fireplace
MM63FRBL	Brick Panels - Running Bond for 63" Fireplace
MM49SHBL	Brick Panels - Herringbone for 49" Fireplace
MM49FRBL	Brick Panels - Running Bone for 49" Fireplace
MM44SHBL	Brick Panels - Herringbone for 44" Fireplace
MM44FRBL	Brick Panels - Running Bond for 44" Fireplace
MM39SHBL	Brick Panels - Herringbone for 39" Fireplace
MM39FRBL	Brick Panels - Running Bond for 39" Fireplace
MM43STSHBL	Brick Panels - Herringbone for 43" See-Thru Fireplace
MM43STFRBL	Brick Panels - Running Bond for 43" See-Thru Fireplace
MM33SHBL	Brick Panels - Herringbone for 33" Fireplace
MM33FRBL	Brick Panels - Running Bond for 33" Fireplace
Height Kits (Includes 1 Rear Wall & 2 Side Walls)	
MM63HK	Height Kit Includes (1) MFP63-2 & (2) MFP63-3
MM49HK	Height Kit Includes (1) MFP49-2 & (2) MFP49-3
MM44HK	Height Kit Includes (1) MFP44-2 & (2) MFP44-3
MM39HK	Height Kit Includes (1) MFP39-2 & (2) MFP39-3
MM43STHK	Height Kit Includes (2) MFPST43-3
MM33HK	Height Kit Includes (1) MFP33-2 & MFP33-3
Brick Panels for Height Kits	
MM63SHBLX	Brick Panels - Herringbone for 63" Fireplace & MM63HK
MM49SHBLX	Brick Panels - Herringbone for 49" Fireplace & MM49HK
MM44SHBLX	Brick Panels - Herringbone for 44" Fireplace & MM44HK
MM39SHBLX	Brick Panels - Herringbone for 39" Fireplace & MM39HK
MM43STSHBLX	Brick Panels - Herringbone for 43" See-Thru Fireplace & MM43STHK
MM33SHBLX	Brick Panels - Herringbone for 33" Fireplace & MM33HK

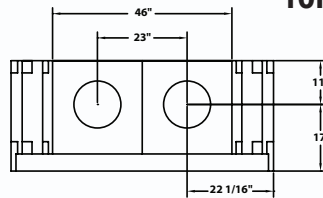
Firebox Dimensions

	MM 33	MM 39	MM 44	MM 49	MM 63	MMST43
A	37	43	48	53	67	53
B	33	39	44	49	63	43
C	23 1/4	30 1/4	35 1/4	40 1/4	53 1/4	43
D	18 1/2	21 1/2	24	26 1/2	-	-
E	21 3/4	27 3/4	32 3/4	37 3/4	46	37 3/4
F	55	63 1/2	63 1/2	63 1/2	73	65
G	12	12	12	12	2 x 12	2 x 12

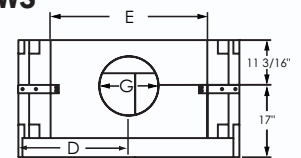
Minimum Framing Dimensions

	MM 33	MM 39	MM 44	MM 49	MM 63	MMST43
Height	57	64	64	64	74	66
Width	41	47	52	57	71	57
Depth	30	30	30	30	30	28

TOP VIEWS

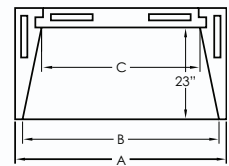
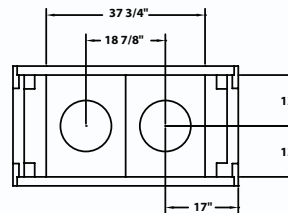


MM63

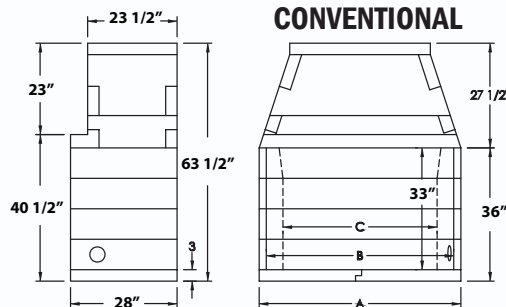


MM33 - MM49

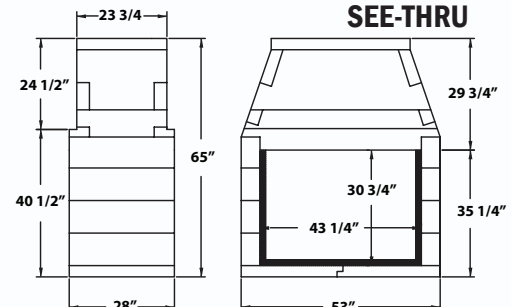
OPENING WIDTHS



CONVENTIONAL



SEE-THRU



FMI PRODUCTS, LLC

www.FMIPRODUCTS.com

For more information, call (866) 328-4537

© 2012 FMI PRODUCTS, LLC



Tested & Certified

