

Inventive Thinking With a Snap



STANDARD FEATURES

- Available In 6" And 7" Diameters
- 430 Stainless Steel Inner Flue And Outer Casing
- 1-1/2" Ceramic Fiber Blanketed Insulation
- Snap-Lock Tab Connection Design
- Continuous Laser Welded Flue And Casing
- UL103HT Listed / ULC-S629
2100° Intermittent;
1000° Continuous
- 2" Clearance To Combustibles
- Limited lifetime warranty

Note: Sections overlap 1-1/2" when joined together, therefore assembled length is 1-1/2" less than listed length.

6" CEILING SUPPORTS FOR FREE-STANDING STOVE INSTALLATIONS



Cathedral Ceiling Support



Standard Ceiling Support

CAT. #	MODEL	DESCRIPTION	CARTON WEIGHT (lbs)	CARTON LENGTH (inches)	CARTON WIDTH (inches)	CARTON HEIGHT (Inches)
7" Wood-Burning Chimney Lengths and Fittings (7" Inner Diam. - 10" Outer Diam.)						
F3994	7SPS6-2	6" SS Chimney Length (2pk)	2.90	12.00	12.00	12.60
F3995	7SPS12-2	12" SS Chimney Length (2pk)	5.00	12.00	12.00	24.60
F3996	7SPS18-2	18" SS Chimney Length (2pk)	7.30	12.00	12.00	36.10
F3997	7SPS24	24" SS Chimney Length	10.00	12.00	12.00	24.60
F3998	7SPS36	36" SS Chimney Length	15.00	12.00	12.00	36.10
F3999	7SPS48	48" SS Chimney Length	20.00	12.00	12.00	48.60
F4000	7SPSE15-2	15° SS Elbow (2pk)	4.80	21.70	11.80	13.80
F4001	7SPSE30-2	30° SS Elbow (2pk)	5.30	21.70	11.80	13.80
F4002	7SPFS	Firestop Spacer	1.40	18.20	18.20	1.50
F4003	7SPIS	Insulation Shield	7.90	20.20	20.20	26.00
F4004	7SPFF	Flat Flashing	2.50	26.25	13.13	24.50
F4005	7SPF5	2/12-5/12 Flashing	1.90	26.25	13.13	24.50
F4006	7SPF10	6/12-10/12 Flashing	2.30	24.25	24.25	37.25
F4008	7SPRB	Roof Brace	5.10	3.00	3.00	36.00
F4009	7SPSC	Storm Collar	0.60	23.50	23.50	1.00
F4010	7SPC	Round Cap with Spark Arrester	5.00	13.70	13.70	12.70
F4012	7SPAS	Adjustable Support	3.20	11.30	4.20	11.30
F4013	7SPWB	Wall Band	1.80	17.50	14.00	2.00
F4014	7SPSB	Support Band	0.80	12.20	12.20	2.00
6" Wood-Burning Chimney Lengths and Fittings (6" Inner Diam. - 9" Outer Diam.)						
F3966	6SPS6-2	6" SS Chimney Length (2pk)	2.40	10.00	10.00	24.60
F3967	6SPS12-2	12" SS Chimney Length (2pk)	4.80	10.00	10.00	24.60
F3968	6SPS18-2	18" SS Chimney Length (2pk)	6.80	10.00	10.00	36.10
F3969	6SPS24	24" SS Chimney Length	10.50	10.00	10.00	24.60
F3970	6SPS36	36" SS Chimney Length	12.50	10.00	10.00	36.10
F3971	6SPS48	48" SS Chimney Length	16.50	10.00	10.00	48.60
F3972	6SPSE15-2	15° SS Elbow (2pk)	4.30	21.70	9.20	13.20
F3973	6SPSE30-2	30° SS Elbow (2pk)	4.80	21.70	9.20	13.20
F3974	6SPFS	Firestop Spacer	1.50	18.20	18.20	1.50
F3975	6SPIS	Insulation Shield	6.50	18.00	18.00	19.50
F3976	6SPFF	Flat Flashing	2.00	26.25	13.13	24.50
F3977	6SPF5	2/12-5/12 Flashing	1.50	26.25	13.13	24.50
F3978	6SPF10	6/12-10/12 Flashing	2.00	31.13	15.38	20.88
F3980	6SPRB	Roof Brace	4.60	3.00	3.00	36.00
F3981	6SPSC	Storm Collar	0.50	22.00	22.00	1.00
F3982	6SPC	Round Cap with Spark Arrester	4.50	13.70	13.70	12.70
F3984	6SPAS	Adjustable Support	3.00	10.00	4.60	10.00
F3985	6SPWB	Wall Band	1.60	17.50	14.00	2.00
F3986	6SPSB	Support Band	0.80	12.20	12.20	2.00
6" Wood-Burning Chimney Components for Freestanding Stoves						
F3983	6SPWF	Non-Insulated Wall Firestop	5.90	18.10	18.10	8.70
F3987	6SPBSCS	Black Standard Ceiling Support	6.70	17.00	17.00	8.20
F3988	6SPBCCS	Black Cathedral Ceiling Support	16.50	12.80	12.80	31.20
F3989	6SPBTC	Black Trim Collar	3.50	13.80	9.10	12.10
F3990	6SPBSWA	Black Single Wall Pipe Adapter	1.90	9.20	9.20	5.00
F3991	6SPST	Tee SS (Tee Cap Included)	8.60	22.20	11.10	18.20
F3992	6SPTS	Tee Support	9.80	17.00	17.00	8.20
F3993	6SPATS	Adjustable Tee Support	11.50	18.10	18.10	8.70



6" Chimney Length



Insulation Shield



15° Elbow



30° Elbow



Firestop Spacer



Flat Flashing



2/12-5/12 Flashing



6/12-10/12 Flashing



Support Band



Wall Band



Adjustable Support



Roof Brace



Storm Collar



Round Cap



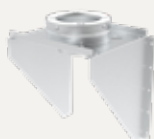
Single Wall Pipe Adapter



Wall Firestop



Tee



Tee Support