



**VENTED GAS LOG SETS**

# The Best Burning, Most Realistic Gas Log Sets In The Industry

About Us  
SCAN FOR MORE INFO



## Only Mother Nature Can Make A Tree, But We Get Pretty Close

There is no better way to replicate real wood than to start with real wood. That's why every Rasmussen log mold originates from select pieces of real wood, using a special process that T.R. Rasmussen developed over 50 years ago. This unique molding technique reproduces even the finest bark detail, and when coupled with our painstaking, multi-step, hand-applied coloring process, produces what we believe to be the best looking, most realistic logs in the industry. Add decades of experience with producing innovative burner systems (including inventing the sand pan burner still in use today), and you can be sure that a Rasmussen log will provide you with the warmth, comfort and romance of firelight for years to come.

### ● Variety of Burner Styles

Rasmussen makes several styles of burners that offer different flame patterns and installation options, allowing you to create the perfect look for your home.

### ● Hand-Applied Color

We formulate our own environmentally-safe ceramic color coatings for the best longevity. These coatings are then hand-applied in a multi-step process that re-creates the randomness and complexity of color that characterizes real wood.

### ● Steel Reinforced Ceramic

Starting with the finest quality fireproof refractory ceramic makes a strong log. We use rigid steel reinforcing rods for even greater durability.

### ● Many Control Options

Rasmussen offers a full range of choices for lighting your gas log set:

- Match Lighted (natural gas only)
- "EASY" safety pilot system, in Manual, Remote Ready (with multiple transmitter options) and Variable Flame Height Remote Control.
- Millivolt safety pilot systems, which can be integrated with a variety of external switching devices, including home automation systems.
- Electronic Ignition pilot-on-demand systems, both battery and 120 volt powered.



## Four Generations Of Pride And Tradition

It was 1907 when Rasmus Rasmussen, a Danish immigrant, opened his blacksmith shop on Philadelphia Street in Whittier, CA. In addition to more traditional blacksmith services, Rasmus

quickly developed a sideline business making fancy fireplace tools and screens. Through the decades, the business evolved and changed. Rasmussen Iron Works made everything from truck body parts, to steel buildings, to welding rod holders used to build ships for WWII. After the war, Rasmus' son, Ted Sr., opened a fireplace retail store in front of the manufacturing shop. Among the items he carried were gas logs.

It would be Ted Sr.'s son T.R. who would make a breakthrough in gas logs in 1958. After seeing a plumber trying to bubble natural gas through water to create a "dancing flame" effect for a restaurant's waiting area, T.R. developed the sand pan burner, which is still sold today and still provides the most realistic wood flame available in a gas log set. When he couldn't find a manufacturer to make logs for him, T.R. developed his own molding technique, using real wood logs as patterns, which was capable of reproducing the smallest bark detail in the finest refractory materials available.

There is now a fourth generation of the Rasmussen family working out of the facilities on Philadelphia Street. The innovations have continued, including the Chillbuster line of gas log heaters and the Alterna line of contemporary gas fires. Through all the changes over the years, craftsmanship, value, and industry leadership have been the constants at Rasmussen Iron Works, Inc.



Log Materials  
SCAN FOR MORE INFO



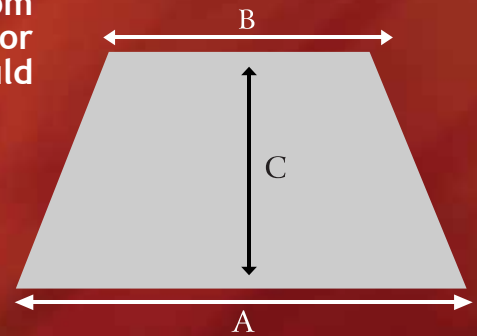
# Sizing Your Gas Log Set

Rasmussen Gas Log sets are available in standard sizes from 12" to 96" to fit most fireplaces (styles vary per size). For best appearance and proper performance, your log set should be sized to your fireplace using the following guidelines:

A - Front Width = Minimum 6" to 10" greater than log set size for Match Lighted; 9" to 12" for Valve Vanisher; 12" to 16" with side located safety control.

B - Rear Width = Not less than nominal log set size.

C - Depth = Varies with burner type and set size.



12" = CXF (12" & 15") & TNA	13" = F & CS (up to 30")	14" = CXF (18" - 30" set sizes) & TNA-E
15" = FX (12" to 30")	16" = CXF (36") & LC (18" - 30" set sizes)	18" = FX (33" & larger) and CS (27W, 30W & larger)
	20" = LD (24" & 30X set size)	22" = LD (36" - 96" set size)

Please refer to specific model instructions and sizing information available at [www.RasBox.com](http://www.RasBox.com), or request a Personalized Log Set Sizing from [www.RasmussenGasLogs.com](http://www.RasmussenGasLogs.com)

# Custom & Rumford Gas Log Sets

## Retiring Tipi



Rasmussen specializes in designing custom gas log sets for large and unusual fireplaces by creating a log and flame display in proportion to your unique fireplace opening. We have designed sets to fit the steep taper and tall opening of the Rumford Fireplace design.

Custom Sets  
SCAN FOR MORE INFO

Download Best Scanner Free at [www.i-nigma.mobi](http://www.i-nigma.mobi)



## Rumford Tipi



# Valve Vanisher™

The Valve Vanisher™ addresses the three biggest issues regarding Electronic Ignition and Millivolt control systems:

- 1) Eliminates the “Big Ugly Box” (see photo at right).
- 2) Eliminates the off-centering or downsizing of the log set to accommodate the placement of the Big Ugly Box.
- 3) Places the controls in a cooler zone, reducing service calls and increasing the life of the controls.

## Features:

- Sizes from 15” to 30”.
- Eight burner styles: F, FX, DF-CF, CS, CXF, LC, FGV/FDV/FLB and TNA (for Rumford fireplaces).
- Electronic Ignition (VEI) (pilot-on-demand, variable flame height remote) and Millivolt (VMV) (standing pilot, switch/remote ready) control systems.
- Factory assembled and tested for easy installation.
- F, FX and DF-CF certified to ANSI Z21.60 standard.
- Excellent source of emergency heat - no electricity required, other than batteries.
- Millivolt control can be interfaced with home automation system, exhaust fans and automatic dampers.
- Raises the log set by 2 5/8”, creating a false floor under which the control system is located.



Flaming Ember Burner with Valve Vanisher (top 24”) and EIS-RS150 (bottom 20”). Same automatic lighting and flame control, but better aesthetics and easier installation with the Valve Vanisher.



Obscure but don't block the air vents to keep components cool.



Flaming Ember XTRA Burner (FX) (shown)  
Flaming Ember Burner (F)



Valve Vanisher  
SCAN FOR MORE INFO



Double Face Burner (DF-CF)



Multi-Burner (LC)



Custom Embers Burner (CXF)



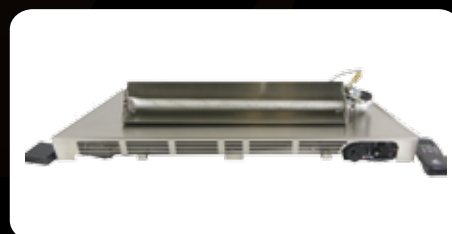
Tipi/Andiron Burner For Rumford (TNA)



Millivolt Control Valve And Switch



Custom Pan Burner (CS)



FireLine/FireGlitter/FireDrops Burner  
(FLB, FGV, FDV)

# "EASY" Safety Pilot Lighting Controls

ANSI Certified sets include EASY Controls with F, FX and DF-CF burners

The "EASY" system uses a common valve that offers many control options and the ability to upgrade functionality at any time (no need to replace the whole system). Controls provide convenient lighting as well as safety shut down in the event of an interruption in the gas supply or a flameout. Good for 30" and smaller sets.



**Manual Control (SPK3E)**  
Light burner by turning knob.



**Switch/Remote Ready Control (RPK3E)**  
Light burner with receiver switch or one of the five Wireless Transmitter Devices below.



**Variable Flame Height Remote Control (RMC1E)**  
Light burner and adjust flame height by pushing button.



**ON/OFF Remote (SR-2R)**



**ON/OFF Remote with Thermostat (THR-2R)**



**Wall Switch (WS-2R)**



**Wall Thermostat (TS-2R)**



**Wall Timer (WT-2R)**



**Ceramic Log House for all remote receivers (RH2)**

NOTE: Any of these five transmitters will operate the RMC1E, but they do not include the "one touch" shut-down featured on the remote included with the RMC1E.

## Electronic Ignition/Pilot On Demand Controls

Pilot lights with each use by automatic spark. Pilot shuts down when burner is turned off.



24V systems. Install outside of firebox. BTU capacities up to 720,000 BTU/hour.



Battery Operated-install inside firebox  
EIS-RS150 • 100,000 max BTU

A/C or Battery - install outside firebox  
EIS-RL150 • 100,000 max BTU



RPK3 for 30" and smaller (shown). RPK1 for 33" to 48". Kits for larger set sizes available.

Millivolt and EIS controls may be used with Home Automation Systems

## Millivolt Safety Pilot Lighting Controls

## Remote Controls and Switching Devices for Millivolt and 24v EIS



Lighting Controls  
SCAN FOR MORE INFO



**ON/OFF RF Remote (SR-MV1)**



**ON/OFF Remote With Thermostat RF (THR-MV1)**



**Wall Thermostat (TS-1)**



**Wall Switch (WS-1) Wall Timer (WT-1)**

Choose Your Burner, then choose your log set. Rasmussen gas logs offers this “mix and match” versatility to allow you to create the perfect look for your fireplace. Any of the burners below can be used with most of the log sets shown on the next pages. The log photos below feature the Evening Cross Fire log set on each burner type for easy flame comparison.

Burner systems include pan filler, Ember Magic, “whistle-free” stainless steel connector, damper clamp and installation instructions. Pan filler note: Natural Gas burners use specially granulated white sand. Propane burners use black volcanic ash.

Burners  
SCAN FOR MORE INFO



## F Burner



— The F Burner is our basic single tube burner designed to be used under a log grate. It produces a pleasing, variable flame with a more compact ember bed.

The FX Burner features the same main burner tube as the F, but adds dual ember booster tubes for a larger, brighter ember bed in front of the logs.

## FX Burner



## CS Burner



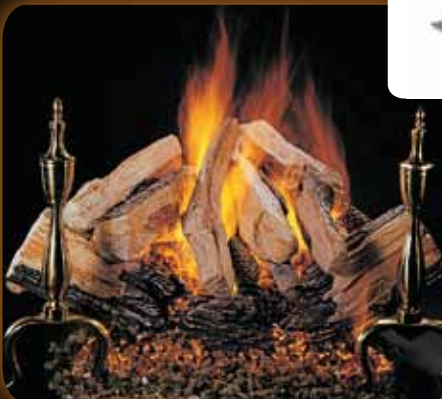
— The CS Burner is the original pan type burner, which can be used with legs for a clean look or without legs for a pit fire look.

The CXF Burner combines the full, realistic flame of the CS with the larger ember bed of the FX. The ramped pan is height adjustable for added versatility.

## CXF Burner



## TNA Burner



— The TNA Burner is designed for use in narrow-backed Kiva and Rumford fireplaces with tall or short tipi log arrangements, or with andirons (with the Evening Series log sets.)

The LC & LD Burner features multi-tiered burners integrated with the log grate. Best used with Evening Series log sets.

## LC & LD Burner



# Double Face Burners



See-through fireplaces require special burners, parallel grates and logs with two front logs so that the log set looks similar and in scale from both openings.

The DF-CF Burner (left) is a full pan with a single pipe for main flame and multiple ember boosters to provide ember glow on both sides. 16" deep with the grate.

The Custom Pan Burner (CS) also functions as a Double Face Burner.

Most logs can be ordered as Double Face by prefixing the item number with "DF-".



DF-LC is 21" deep and requires two Evening Series single sided log sets. Sizes 18"-36".



DF-LD is 25" deep and requires two Timber-Fire log sets. Sizes 18-60".



DF Burners  
SCAN FOR MORE INFO

Download Best Scanner Free at [www.i-nigma.mobi](http://www.i-nigma.mobi)

# Fire Pit Logs

## Arrangements For 360-Degree Viewing

Log sets designed with one large log that bisects the diameter and supports the other logs to create the all-around appearance. Footprint diameter sizes from 12" to 64". Use with ring burners covered with volcanic ash. For indoor and outdoor use.



Available in these styles:  
1) Bark/Split  
2) Birch  
3) Driftwood

FirePit Logs  
SCAN FOR MORE INFO



# Ring Burners

Use underneath FirePit Logs. Natural gas, match lighted only. Heavy duty Black-painted or Stainless steel pipe. 12" and 18" Single Ring; 22", 24", 30" and 36" Double Rings. Install with holes down covered with volcanic ash for best effect.



# Rasmussen Evening Series Log Sets

Evening Series Log Sets feature a broken, charred front log for enhanced realism and additional ember bed inside the log set. This creates the appearance of a wood fire that has been burning for longer than the “fresh wood” look of a traditional log set. Chunk kits can be added to the Evening Series to increase the width or fullness of the set, and when paired with our TNA burner and your favorite andirons, they are a versatile choice for narrow-backed fireplaces such as Rumfords.



**Evening Prestige (EPR) 20-36”**

Large scale set with heavy bark, split and char features. Two piece front log. Good for masonry and larger factory-built fireplaces.



**Evening Cross Fire (EXF) 20-30”**

Reversible Bark/Split Logs with char features and pine cones. Two piece front log. Lower profile good for standard factory-built and larger fireplaces.



**Evening Desire (ED) 20-30”**

Reversible Bark/Split Logs with char features. Two piece front log. Taller profile is good for masonry and larger factory-built fireplaces.



Evening Series  
SCAN FOR BURNING VIDEOS



**TimberFire (PH) 18-96”**

Large scale sets for large fireplaces. Multiple piece front log.



**Evening Lone Star (ELS) 20-30”**

Bark and char front logs with mixed bark and split top logs and pine cones. Two piece front log. Lower profile good for standard factory-built and larger fireplaces.



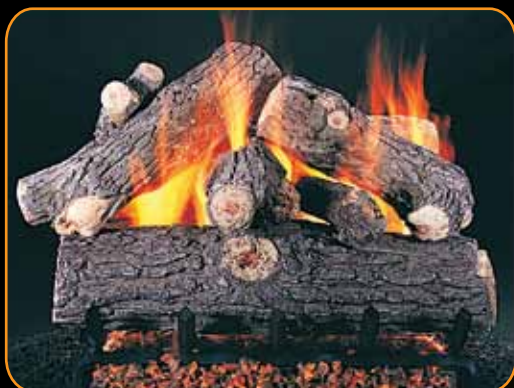
**Evening CampFire (EC) 20-30”**

Gnarled driftwood with char features. Two piece front log. Lower profile good for standard factory-built and larger fireplaces.



# Rasmussen Vented Gas Log Sets

Traditional Log Sets feature a one-piece front and rear log together with a variety of smaller pieces for stacking. Choose from several species of wood (molded from the real thing) to achieve a look that blends with your surroundings. Several sets feature reversible logs that can display either a bark or split side, and numerous optional chunk, chip, twig and pine cone kits are available (see page 11). Pair with the burner style of your choice to create the look you desire.



**Prestige Oak (PR) 18-60"**

Heavy bark logs with straight one-piece front log. Full appearance for tall openings and larger fireplaces.



**Cross Fire (XF) 18-30"**

Reversible Bark/Split Logs and pine cones. Straight one-piece front log. Larger scale is good for masonry and larger factory-built fireplaces.



**Lone Star (LS) 12-30"**

Heavy bark straight front log with split and bark top logs and pine cones. Lower profile good for standard factory-built and larger fireplaces.



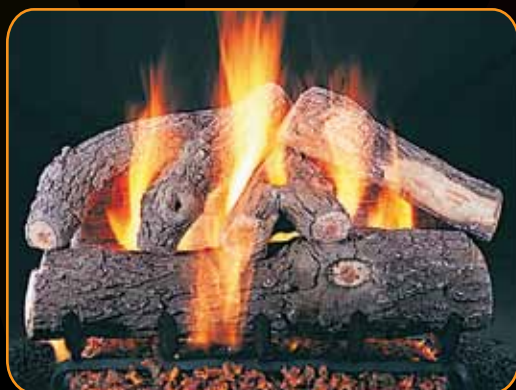
**Traditional Logs**

SCAN FOR BURNING VIDEOS



**Bonfire (BF) 18-60"**

Varied sizes of bark logs with pine cones for a rustic appearance. Good for use in peninsula fireplaces with CS burner.



**Frosted Oak (S) 18-33"**

Full rounded straight one-piece front log with large knot and heavy bark. Full appearance for larger fireplaces.



**Manzanita (ML) 15-36"**

Gnarled driftwood. One-piece front log. Lower profile good for standard factory-built and larger fireplaces.

All logs shown on "FX" burner. All log styles shown are available in double-sided versions for see-through fireplaces. Vented log sets are for use only in fully functioning wood-burning fireplaces with the damper wide open.



Specialty Sets  
SCAN FOR BURNING VIDEOS



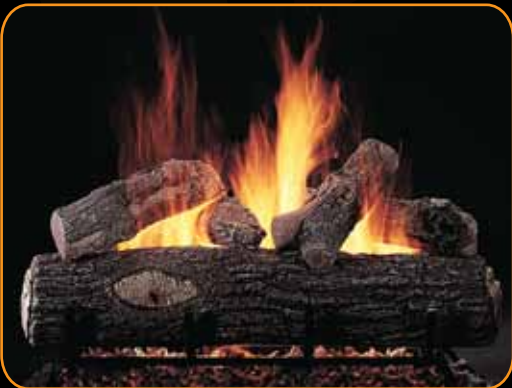
### Birch (WB) 18-30"

Specialty wood with smooth finish and lighter coloration for formal settings and regional preferences. Straight one-piece front log.



### Pine Cones (PC) 18-36"

Use as either Single or Double Face. Combine sets for larger sizes.



### Highland Oak (RD) 18 & 24"

Promotional/Builder Set with bark logs. Single Face only.

Alterna Sets are perfect if you're looking for something different or less traditional than a wood log set. They are a great complement to modern decor and are available in a variety of styles. Visit [rasmussen.biz](http://rasmussen.biz) for more options.



### FireBalls™

Uniform spheres (shown in 8") in diameters from 4" to 12", and mixed sizes of full and half spheres.



Alterna  
SCAN FOR MORE INFO



### FireStones™

Natural looking but made of fireproof material that does not "pop" like real stones.



### FireShapes™

Geometric shapes for contemporary decor, where logs would be out of place.



### FireGlitter™

High temperature glass (shown in Platinum) and FireDrops™ (beads) in a variety of colors. Place FireBalls™ or Shapes on top to increase scale and interest.

# Log Set Enhancements



Chunk Kit (ECCHNK)  
for use with EC sets



Chunk Kit (CHNK1)  
for use with ED sets



Chunks & Tiny Pine Cone  
(CKPT)



Box of Chunkers (BOC)



Chunk Kit (CHNK3)  
for use with EXF & ELS sets



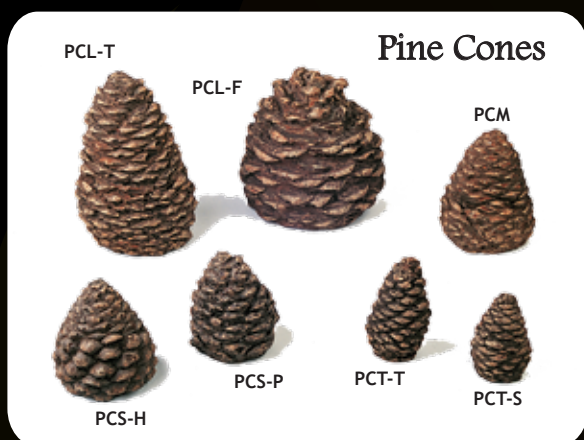
Chunk Kit (CHNK2)  
for use with EPR sets



Chips & Tiny Pine Cones Kit  
(CPPT)



Chip Kit (CPCP)



Enhancements  
SCAN FOR MORE INFO



Ember Magic  
(EMX)



Extra Coarse Vermiculite  
(MGX)



Silica Sand (SS)  
Pan filler for Natural Gas



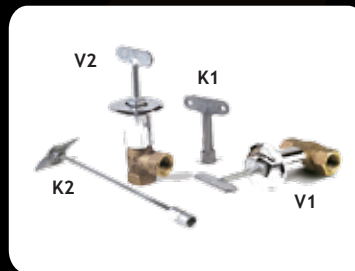
Volcanic Ash (VA)  
Pan filler for Propane



Ember Booster (EB)  
Increases ember bed on F burner



Manual On/Off Valve  
(V17B)



Log Lighter Valves & Keys



Log Lighter Burners Convenient gas  
kindling for wood fires

# Need More Information?

Gas Logs and Alterna website: [www.RasmussenGasLogs.com](http://www.RasmussenGasLogs.com)

Corporate website: [www.Rasmussen.biz](http://www.Rasmussen.biz)

Knowledge Base: [www.RasBox.com](http://www.RasBox.com) for: • Installation/Instruction Manuals • FAQs • Brochures  
• Troubleshooting Information • Etc.

Videos: [www.YouTube.com/RasmussenGasLogs](http://www.YouTube.com/RasmussenGasLogs)

Photo Repository: [www.Rasmussen.Smugmug.com](http://www.Rasmussen.Smugmug.com)



Rasmussen  
Resources  
SCAN FOR MORE INFO

## Solaire Infrared Grills

Solaire Infrared Grills heat up in just 3 minutes to searing temperatures, grill food in half the time and make food taste better. Sizes from portable to 56", with a full complement of accessories needed to create your dream outdoor kitchen.

[www.SolaireGrills.com](http://www.SolaireGrills.com)



Solaire Infrared Grills  
SCAN FOR MORE INFO



## Bromic Heaters

Innovation meets aesthetics, to bring you a powerful range of heaters that re-define the world of heating. The Bromic line of heaters combine beauty with heating to provide benefits never before seen in outdoor heaters. Gas and electric models.

[www.radiantpatioheater.com](http://www.radiantpatioheater.com)



Bromic Heaters  
SCAN FOR MORE INFO



RASMUSSEN IRON WORKS, INC. • 12028 Philadelphia St. • Whittier, CA 90601 • USA  
Phone: (562) 696-8718 • Fax: (562) 698-3510 • [info@rasmussen.biz](mailto:info@rasmussen.biz)

© 2012 Rasmussen Iron Works, Inc. Form: LOGCAT-1112

