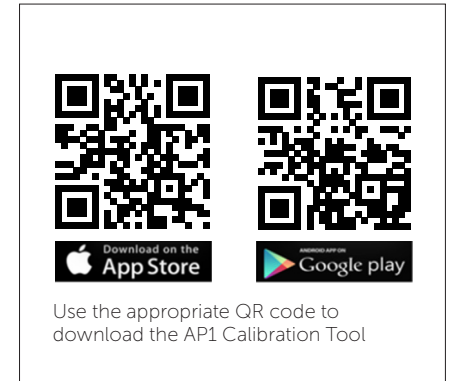
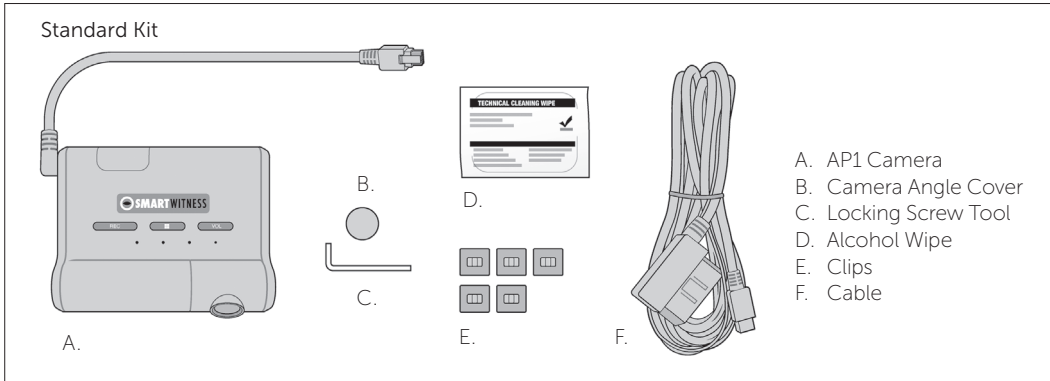


QUICK START INSTALLATION GUIDE

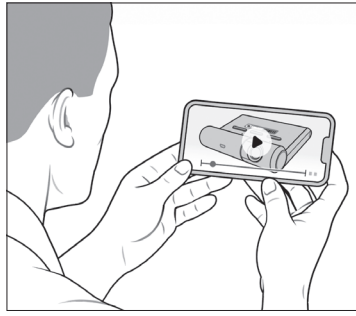
FOR AP1 VIDEO TELEMATICS CAMERA



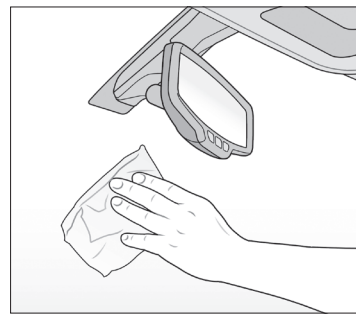
1. Review the package contents.



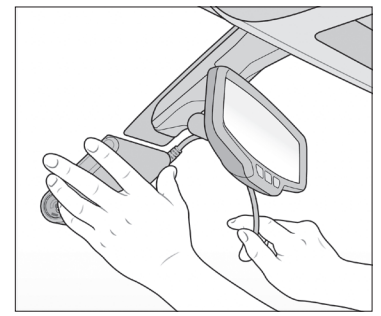
2. Scan the QR code inside the box for a detailed installation video, spec sheet and user guide.



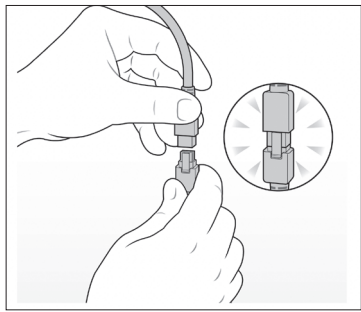
3. Watch the *installation video*. Refer to proper camera installation guidelines [here](#).



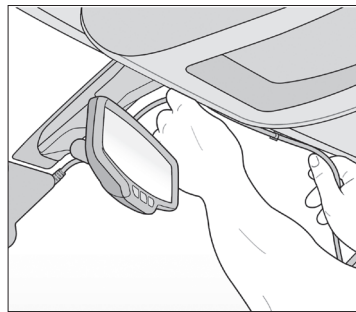
4. Use wipe to clean the window. Allow time to dry. To determine compliant device placement, check local regulations.



5. Remove backing, then press evenly to ensure unit is flush against the glass. Hold to window for 30 seconds.



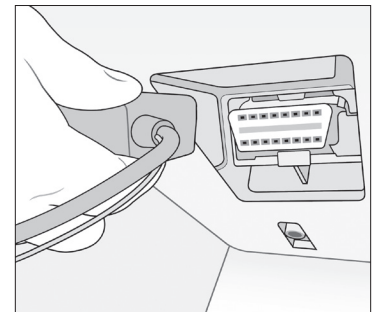
6. Connect AP1 unit wire to main cable harness.



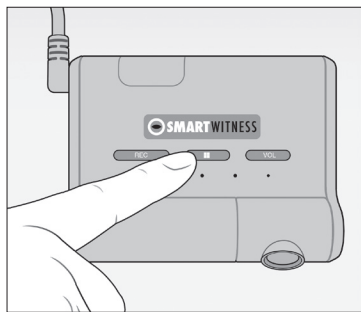
7. Remove adhesive backing on clips, and adhere cable to windshield.



8. Tuck cable behind weather stripping, and push stripping in to secure it.



9. Plug main cable into your vehicle's OBDII port. Turn on vehicle. LED sequence will begin. Look for all 3 solid LEDs.

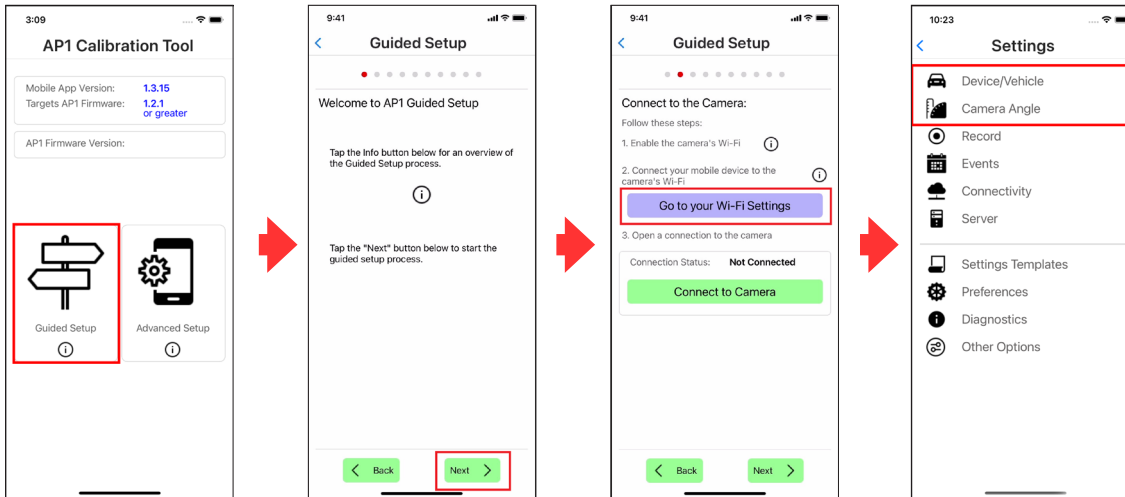


10. Hold center button on AP1 camera unit for 5 seconds. Release button, and wait 3 seconds for blinking orange light.



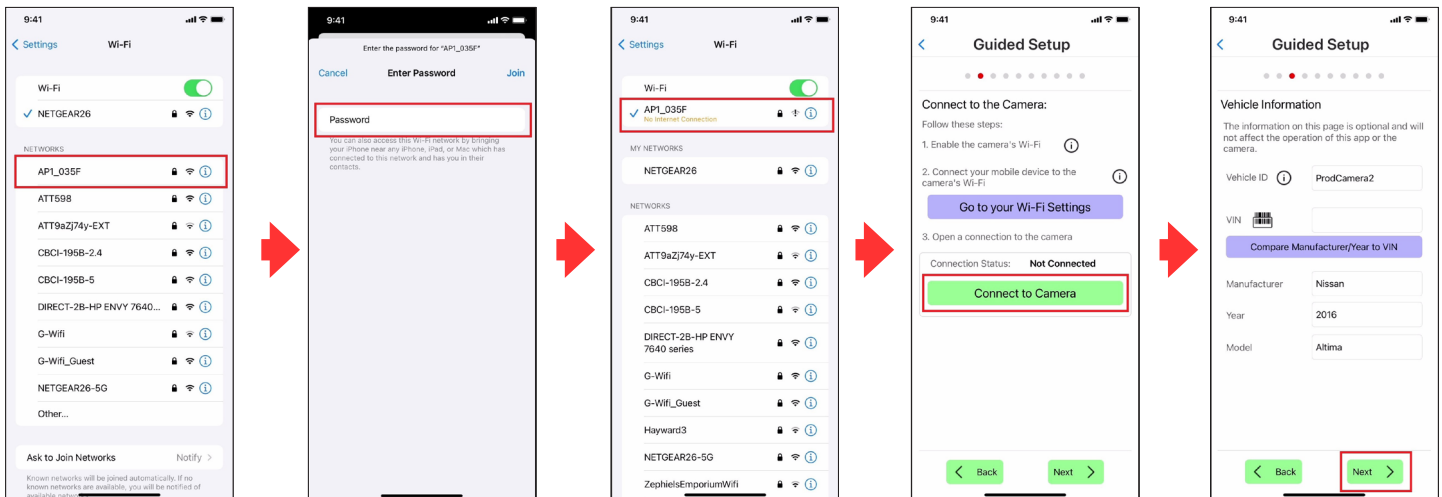
11. Scan the QR code above to find and download the app.

Proceed to next page for **device calibration** >



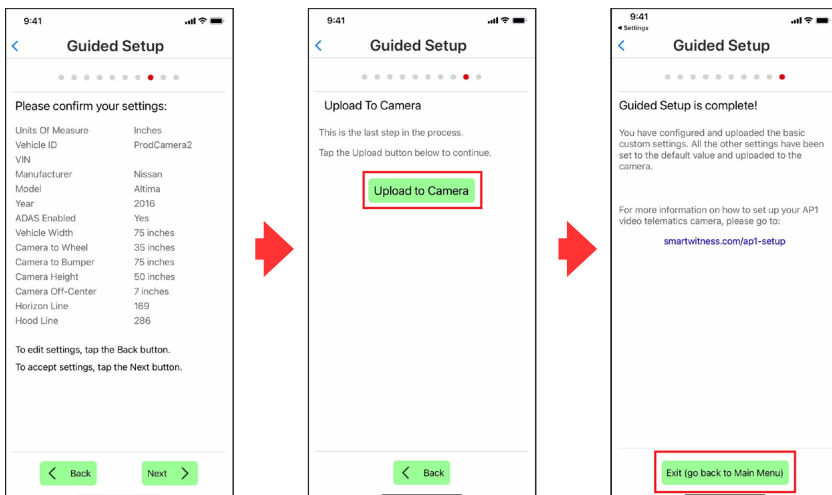
12. Open the **AP1 Calibration Tool**. Then, on the landing page, choose **Guided Setup**. Throughout this process, you will notice ⓘ buttons – these pop-ups offer contextual details.

13. To connect the app to your AP1, select **Go to your Wi-Fi settings**. **Note:** These images are from iOS devices. AP1 Tool Android screens may appear slightly different.

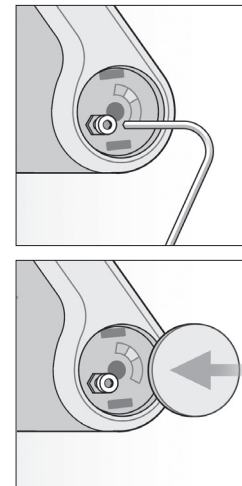


14. On your Wi-Fi settings, select the connection beginning with "AP1." The password is the last 8 digits of the camera's IMEI number, found either on the camera or the box label.

15. Return to the Tool and tap **Connect to Camera**. You should see the message, "Download request was successful." Next, follow each page's prompts to enter and save calibration information. Pay close attention to vehicle measurement and "Horizon" and "Hood" line settings, as accurate values are crucial to proper device function.



16. At the end of the Guided Setup, confirm your settings. To make additional changes, select **Back** and return to previous pages. Once satisfied with your AP1's upload settings, tap **Next** and then **Upload to Camera**. You have completed calibration. Your AP1 will reboot and incorporate your new settings.



17. Tighten the camera angle lock screw, and attach the cover.

Congratulations!
Your AP1 is now ready to go!

smw3270-8-EMEA_0922