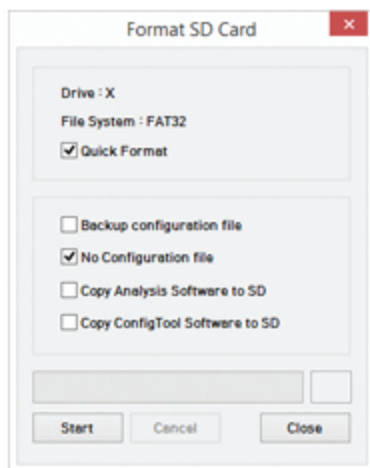
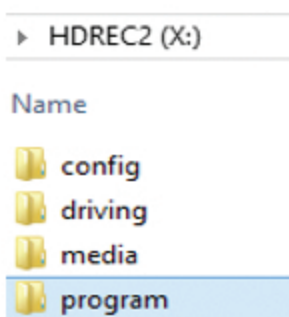


KP1 Firmware Upgrade Instructions

1. To begin the firmware upgrade, you will need to install the KP1 Configuration Tool software on your computer. The firmware must be provided by SmartWitness technical support or your distributor. For full details on configuration tool installation, please go to refer the user manual.
2. Initialize your SD Card using the KP1 configuration software.



3. After initializing, save the firmware file "KP1_X.X.X.bin" inside the folder labeled 'program' on the SD Card.



4. Make sure KP1 is turned off and insert the prepared SD card into KP1 SD slot 1 and turn on the power. Upgrading the unit will usually take about 1 to 2 minutes. You will see blue & green alternating LEDs on the KP1 unit during the upgrade process. **DO NOT TURN OFF THE POWER DURING UPGRADING.**
5. Once the upgrading is finished, KP1 will automatically boot to its programmed recording status.