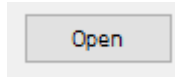
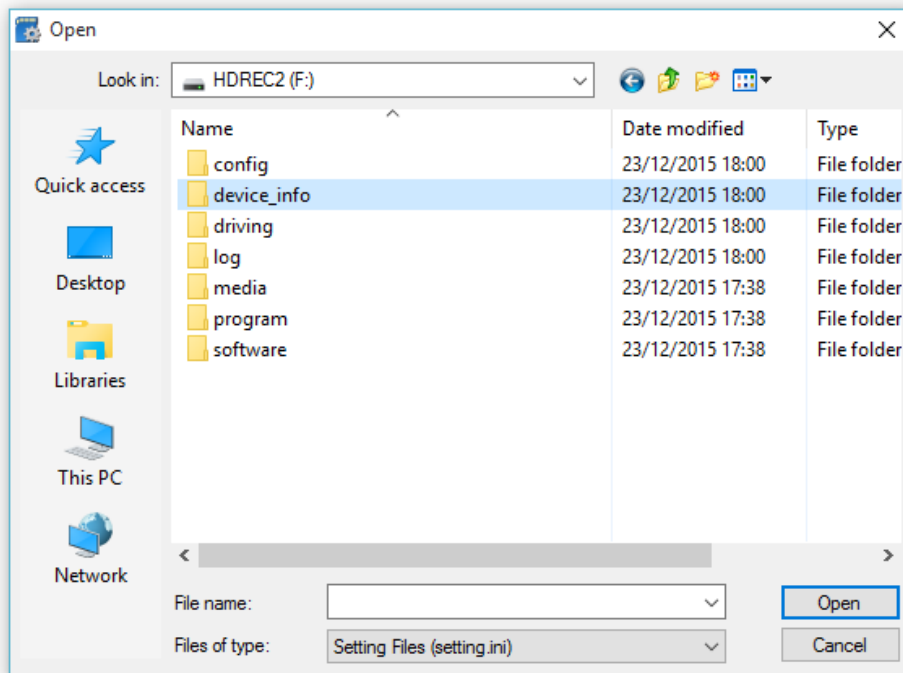


KP1 Settings Change

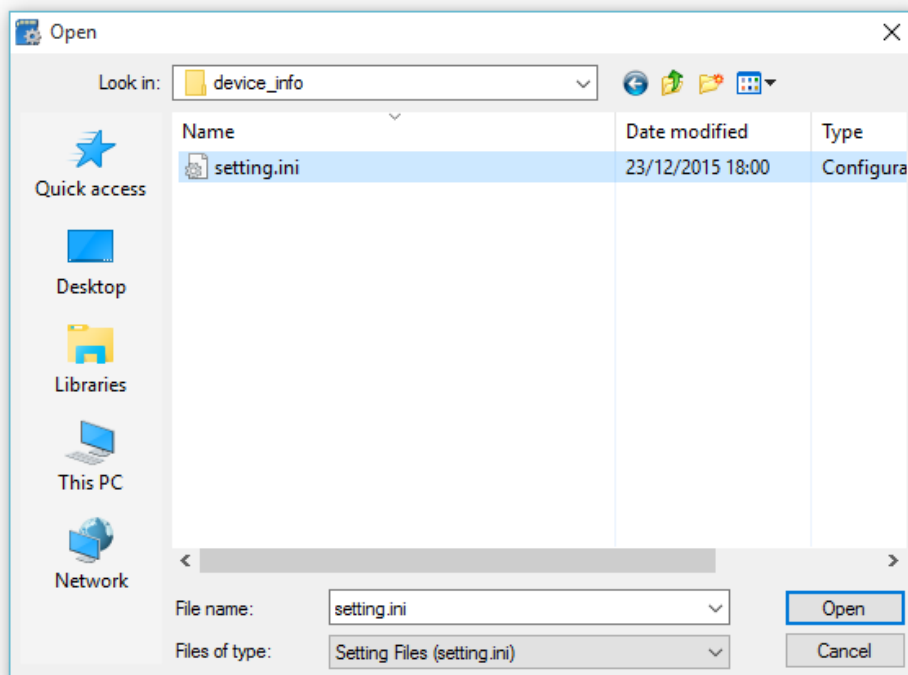
1. Insert the SD card into your PC/laptop and open up Config Tool.
2. Click the **Open** button at the bottom of Config Tool.



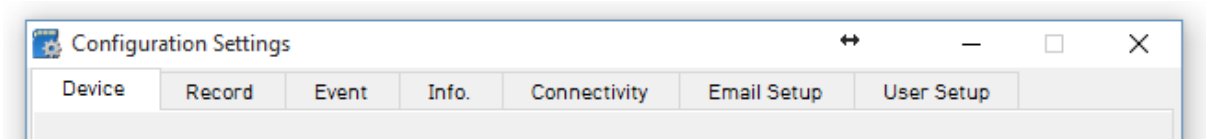
3. Browse to the SD card contents and open up the **device_info** folder.



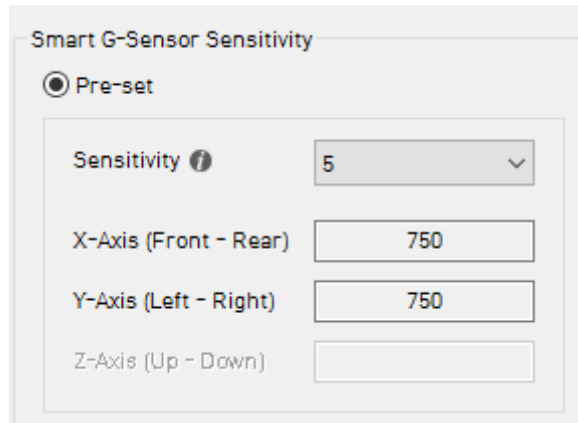
4. Once inside, select the **setting.ini** file and then click **Open** to open up the SD card settings.



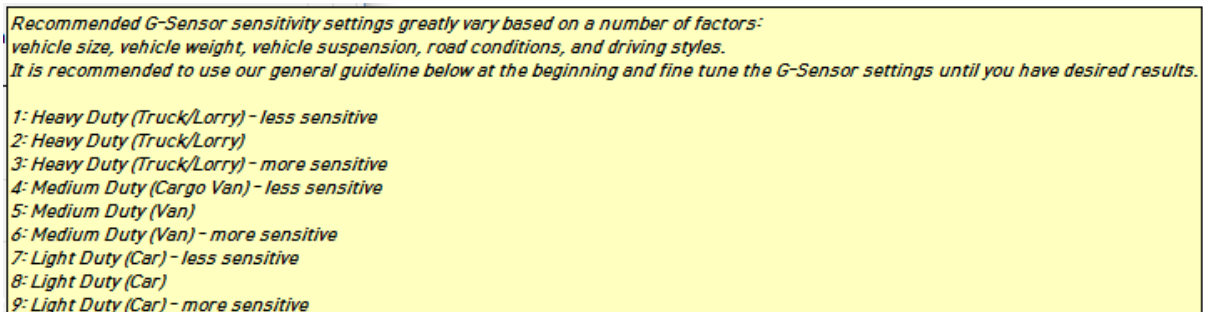
5. Ensure that the **Device** tab is selected at the top of Config Tool.



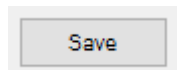
6. You can then adjust the Smart G-Sensor Sensitivity level based on your vehicle type. 1 is the least sensitive level and 9 is the most sensitive.



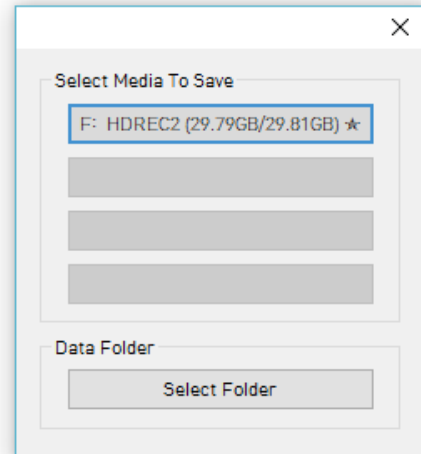
You can also hold your mouse over the "i" information tool tip to show the information below to give an idea of roughly what sensitivity levels to use for your vehicle type.



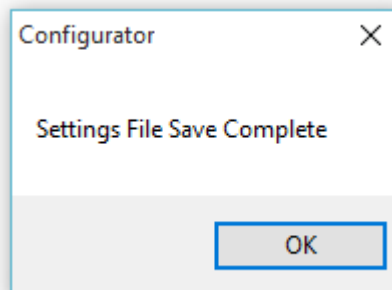
7. Once done click **Save**.



8. Select your SD card drive from the list to save the updated settings.



9. Once saved a confirmation message will appear, press **OK** to complete



10. Remove the SD card, insert it back into the KP1 and power the unit up to apply the new VRN.

The unit will boot up and you will see the LED lights slowly light up in sequence, starting from left to right.

Once complete the unit will have a solid blue light and a solid green light as shown below. This indicates the unit has fully booted and is ready for use.





If you are getting any error lights please see below for more information.

KP1 Error lights

Please see below for explanations of any error lights you may encounter. Please note that you will need to power down the unit before making any of the suggestions below, then power up the unit again once complete.

- **Red LED** – No 2nd Camera. If the config file has a second camera enabled this error light will display. You can either plug in a second camera or ignore this LED. As long as the blue and green LEDs are also solid the unit will still test correctly.
- **No Green LED** – 3G USB dongle error. Check the dongle is inserted correctly and that the settings have applied to the card correctly.
- **Flashing green LED** – SIM not inserted correctly. Take the dongle out and check that SIM card is present and inserted correctly.
- **All flashing lights** – No SD card or card not formatted. Check the SD card is inserted correctly and then check that the card initialised correctly and has the correct settings.