

AHD MDVR Player Software



1. Introduction

The DVR-player is a PC based software used for play back and backup of the HDD records of our AHD mobile DVR's. Requirements for the PC:

CPU: Intel Core / AMD 1Ghz and above

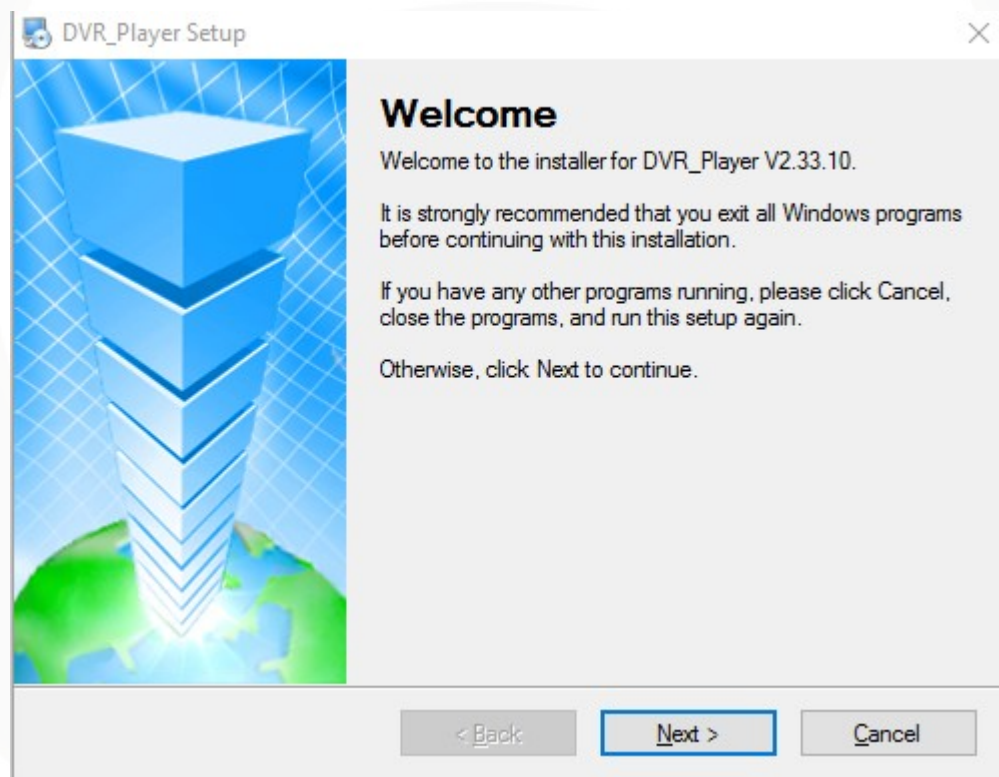
Memory: 512MB and above

Graphics: Support Direct10X

Operating system: Windows XP, Windows 7 , Windows 8 and Windows 10

2. Installation steps

Please note you can download the software from support.smartwitness.com
Double click the "DVR_Player setup.exe" and follow the prompts:



DVR_Player Setup

License Agreement

Please read the following license agreement carefully.

Disclaimer:
Please be sure to carefully read and understand this license agreement (the "agreement"), and decide to accept or not accept the terms of this agreement. Unless you accept the terms of this agreement, please do not install the software on your computer; Once you have installed the software, that automatically means that you have agreed to accept this agreement, the following terms and conditions:

1. This software is the company-specific software, all copyrighted by the company.
2. This software against random distribution, reproduction and distribution.
3. In any case, we do not install, use, and uninstall the software and embedded software and decoders, there may be a defect in the player give you direct or indirect loss resulting from any responsibility.

Installation notes:

I agree to the terms of this license agreement
 I do not agree to the terms of this license agreement

< Back Next > Cancel

DVR_Player Setup

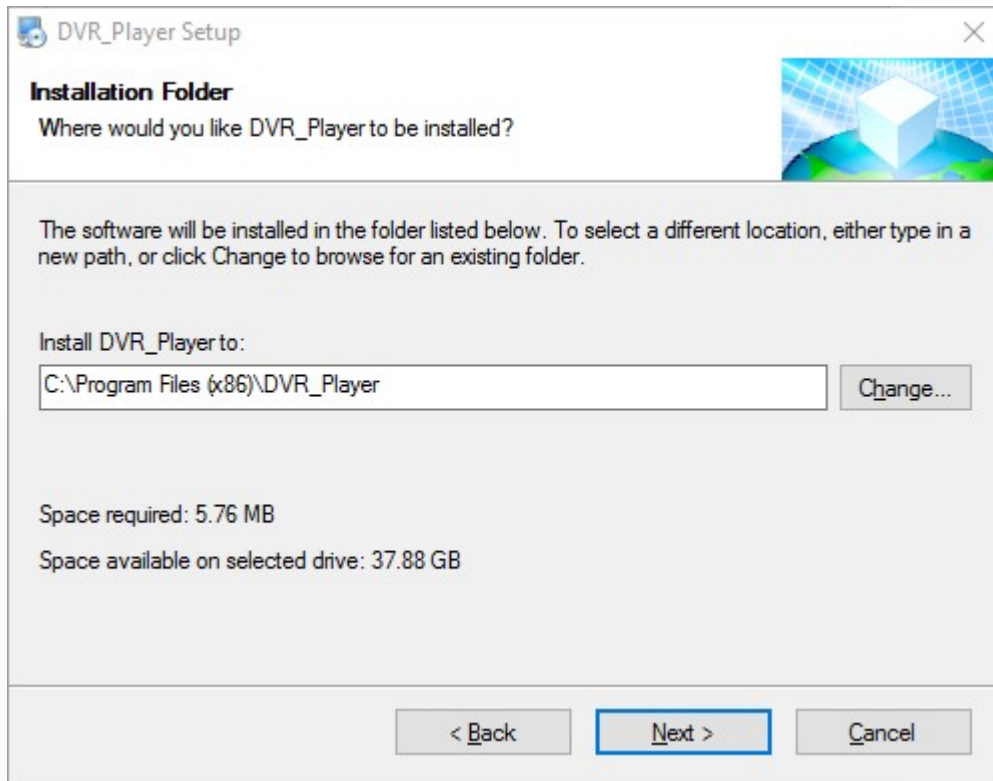
User Information

Enter your user information and click Next to continue.

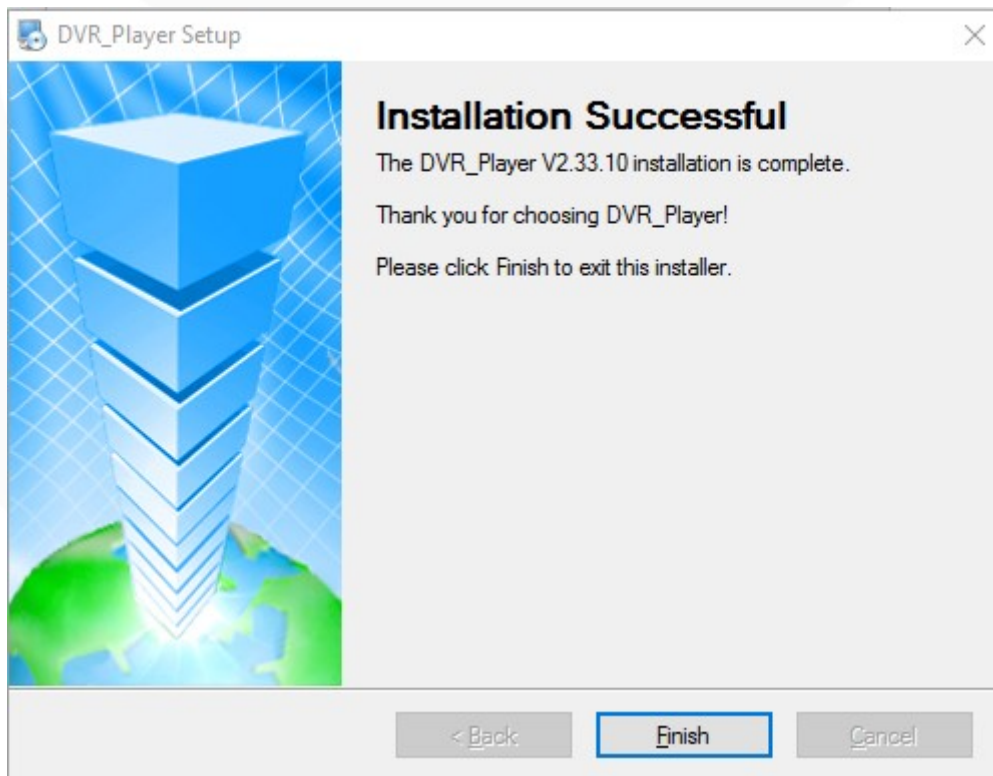
Name:
John

Company:
SmartWitness

< Back Next > Cancel



If you have a firewall you may need to allow the program access.

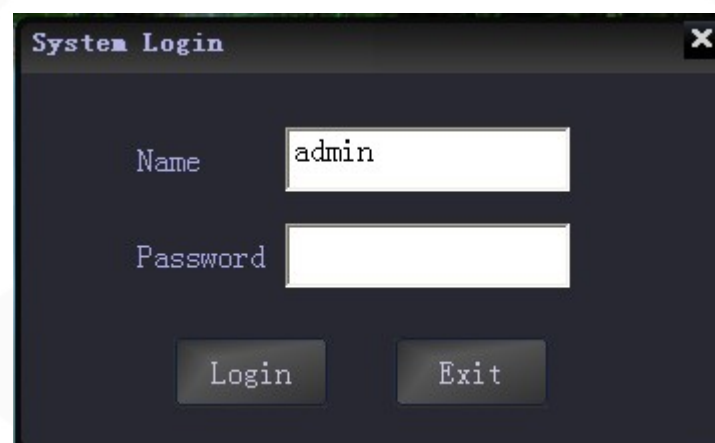


3. Use guide

Take out the HDD box from the AHD MDVR, connect it to the HDD reader and to your PC.

The cable will allow you to change SATA to USB, then to the computer USB port.(The HDD reader has two USB cables,please connect them both to the computer to make sure it works well).

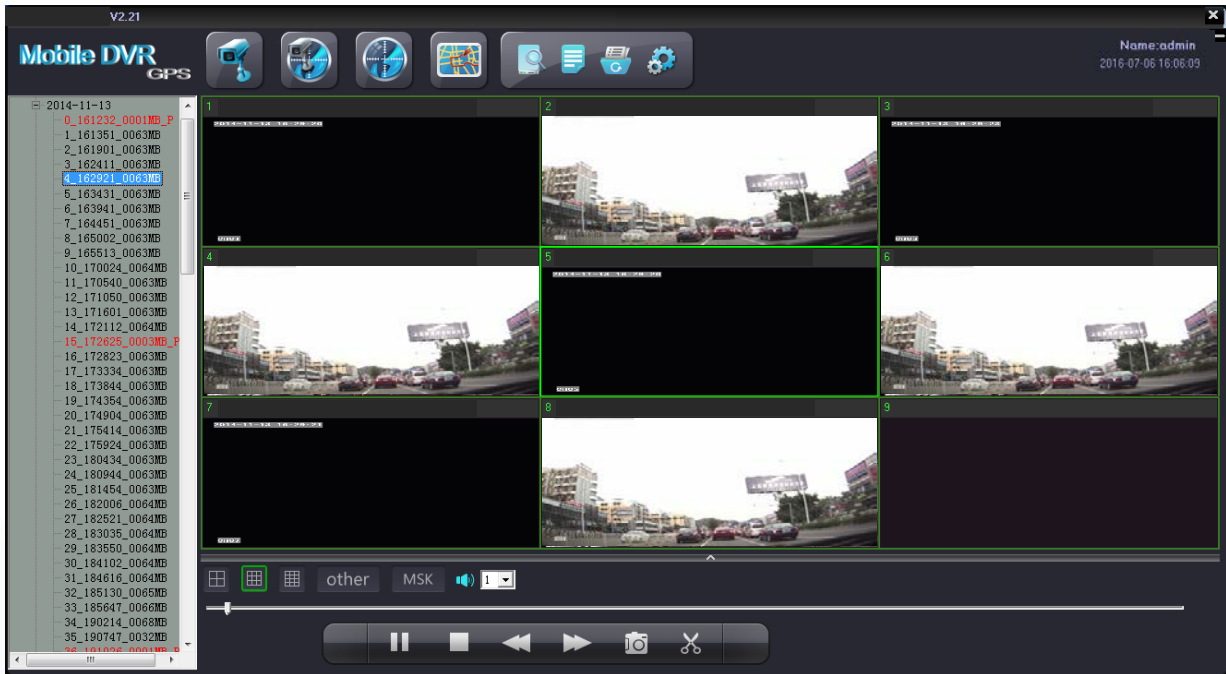
Click Start-> Program-> DVR_player->DVR_player.exe. Your monitor resolution will automatically adjust to 1024*768 when the software starts.



Default name: admin (can't be changed)

Default pass: admin (can't be changed)

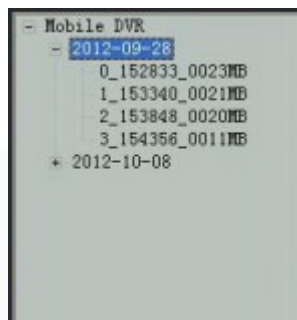
After login, the software will search the HDD info automatically. The software will play the first video records on the HDD.



On the left side of the software, HDD records info will be shown:



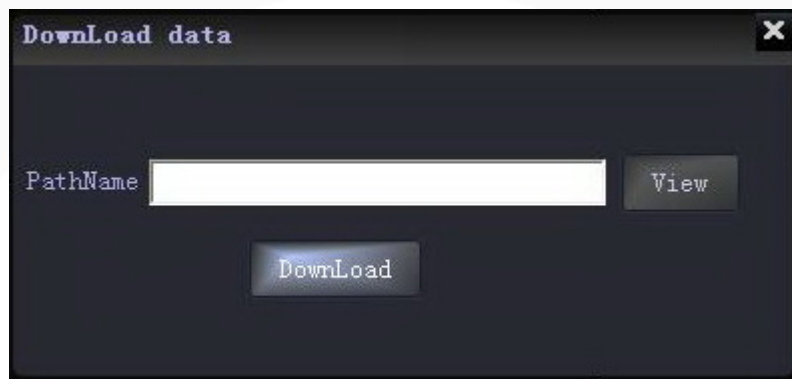
This shows the record date, click the date, it will show the record period and storage it takes up:



Double click the file and it will play, (Red files are the videos recorded after AHD MDVR got restart due to interruption of powered supply); Click the file with right mouse button, it will show the download interface, see below picture:




Click "Download" it will show a window to save the video, see below picture:

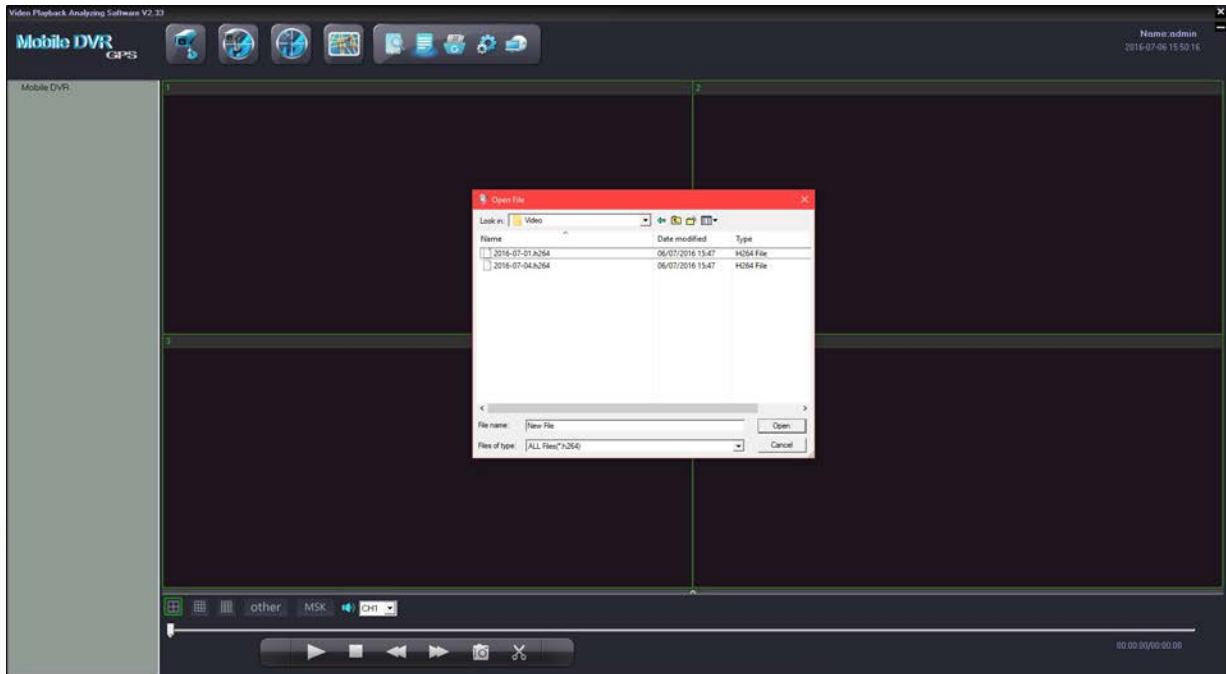


Select a file to save the video and then click "Download" ;

The software will notify "NO DVR HDD" if the AHD MDVR HDD is not detected, see below picture:

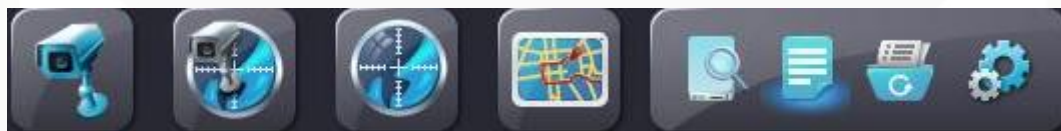



Click "cancel" you can still enter the software interface. the AHD MDVR will back-up H.264 videos stored in computers, in USB or in removable hard disk can be played by clicking  in the software interface to find the recorded video and open it, see "open file" below picture:




Tool bar explanation:

- The upper left buttons :




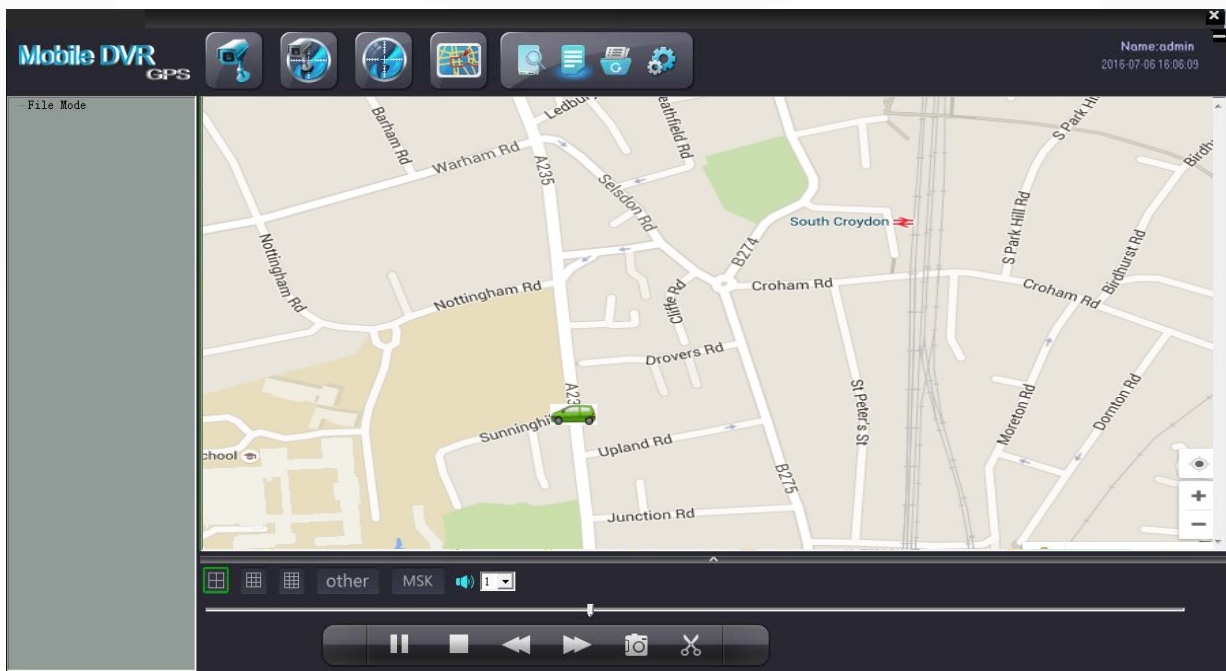
Video  : Show the video playing interface only (no maps):




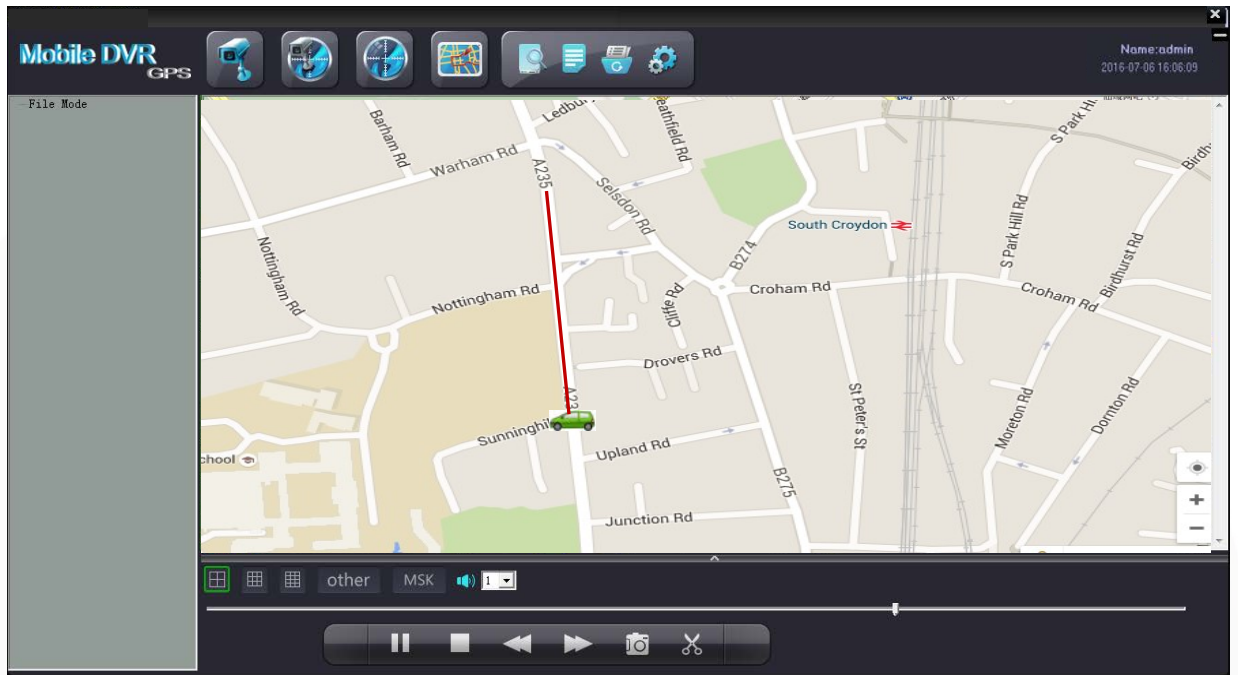
Video/Map  : Show the video playing interface and maps at the same time:




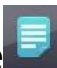
Map  : Show routes in the map in full screen of the playing video :




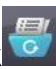
Tracking : The Icon is used for full screen map tracking playback to see the run tracking of the vehicle.

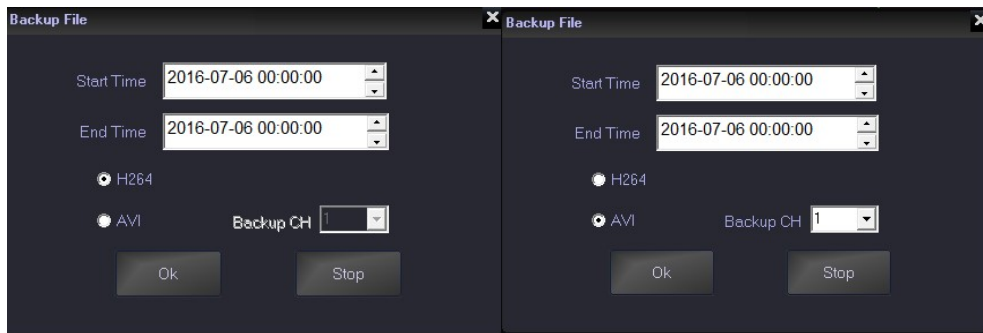


Open HDD  : used to search the hard disk connected with the computer and it will play the earliest recorded video after searching. (This button releases the limitation of the sequence- connecting hard disk or SD card to computers before opening the software. No need to close the software even connecting a new hard disk or SD card with recorded video) .

Open File  : Used to search the videos on your computer, USB or hard disk.

Backup File  : To backup the recorded videos in hard disks into H.264 or AVI format in computers , below is the operation instruction: :


Click  , shows the below window



Input the “start time” ;

Input “end time”;

Select the file format H.264 or AVI, (When selecting AVI you can only backup single channels). After setting, choose the file to store the videos and then click “save”; Or click “stop” during the process if it is necessary.

Set :The icon is used for user name setting , password setting , GPS parameter correction and clear track;like the picture as follow:

Set Param

Set Pass

Old Pass	<input type="text"/>	New Pass	<input type="text"/>
New Name	<input type="text" value="admin"/>	Confirm Pass	<input type="text"/>

Alarm Info Config

Info1: <input type="text" value="Sensor 1 warning!"/>	Info5: <input type="text" value="Sensor 5 warning!"/>
Info2: <input type="text" value="Sensor 2 warning!"/>	Info6: <input type="text" value="Sensor 6 warning!"/>
Info3: <input type="text" value="Sensor 3 warning!"/>	Info7: <input type="text" value="Sensor 7 warning!"/>
Info4: <input type="text" value="Sensor 4 warning!"/>	Info8: <input type="text" value="Sensor 8 warning!"/>
G_Sensor: <input type="text" value="G_Sensor warning!"/>	

RecordPath


SnapshotPath


GPS offset


Lat: <input type="text" value="0.00000000"/>	Speed Unit: <input type="text" value="km/h"/>
Long: <input type="text" value="0.00000000"/>	Speed ruler: <input type="text" value="20"/>


- Tool button under the video playing window:

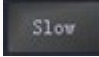



 : Play or pause the video playing


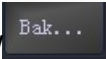
 : Stop the video playing


 : Fast backward;

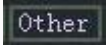
 : Fast forward;

 : Slow Play

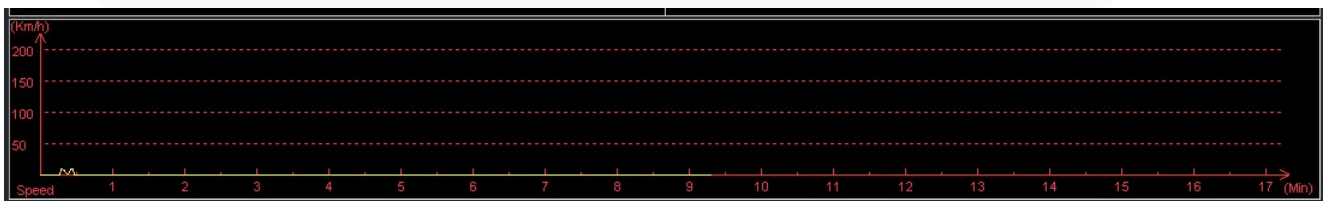
 : Snapshot the video playing back (only when one channel in full screen) which will be saved in the folder where your software is installed by default.

 : backup the playing video with time accurate to second. Click this button it will show  , to stop the action just need to click it again. which will be saved in the folder where your software is installed by default.

 : "4" and "8", click these two buttons to switch the 4c hannel and 8 channel video playing.

 : Click icon to switch the speed curve diagram, G-sensor curve diagram and alarm information:

Speed curve :




G-SENSOR:



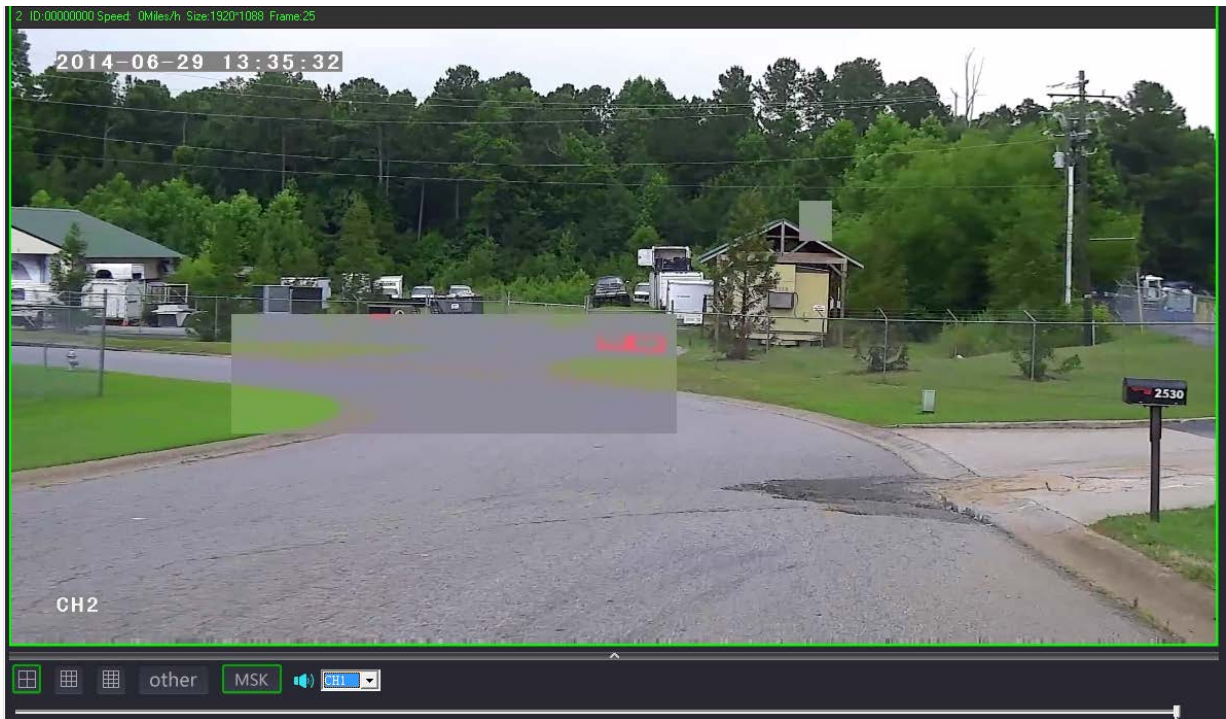
Alarm information :

Play time	Alarm time	Car ID	Alarm Info

Alarm information of the playing videos will show in red color in the information column for the vehicle managers to confirm and analyze. The information will turn into black color when check finished by double clicking the right mouse button.

: When playback the recording ,there is MSK button on the bottom of the screen,click the button,the MSK will turn to the green icon.

At this time, Mosaic function has started, right-click a point that you want to get it masked, then move to the other point, then the diagonal zone will be the masked zone you have drawn.



: choose the audio of the playing video (one channel only)



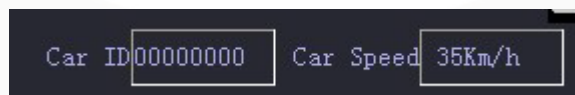
: Click it to show or hide the speed curve diagram, G-sensor curve diagram and alarm information.



: Pull this bar to move the playing video forward or backward.

■ Car ID and Speed: :

Show in the upper right in the software interface:



Marks: The speed can only be shown when the AHD MDVR is with GPS function.



SmartWitness UK

5 The Pavilion, Amber Close,
Tamworth, B77 4RP

+44(0) 844 947 1000

sales@smartwitness.com

SmartWitness USA

1016 Lunt Avenue, Schaumburg,
IL 60193, USA

+1 (312) 981-8774

sales.usa@smartwitness.com

SmartWitness Canada

Metrotower 2, 2600-4720
Kingsway Burnaby, BC V5H
4N2, Canada

+1 (778) 994-6670

sales.can@smartwitness.com