

# SABER®







# FOR THE LOVE OF FOOD

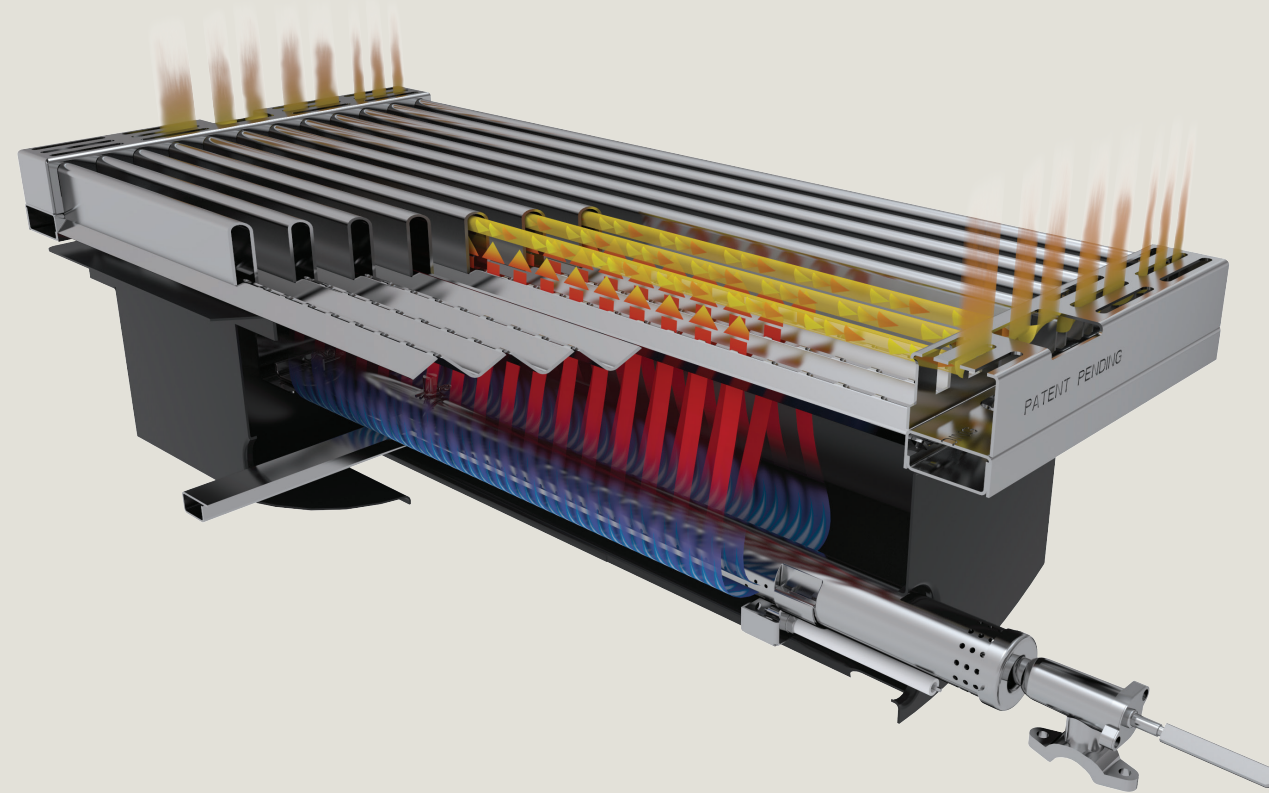
Superior products yield exceptional experiences and phenomenal results.

It's the reason every grill we sell has the best cooking system available at its core, an engine to drive better cookouts. Because, at the end of the day, you grill for one reason. For the Love of Food.



SABER





# SABER® COOKING SYSTEM

- Patented “peaks and valleys” unique system structure eliminates flare-ups
- Fewer BTUs—30% less gas used
- Hassle-free electronic-starting ignition
- Even temperature—no hot or cold spots
- Flexible, wide temperature range
- Warm, roast or store on multiposition warming rack
- Ready when you are. Rapid pre-heat—searing within 10 minutes
- Directs airflow away from the cooking surface—locks in natural flavor and moisture of food
- Cook more food quickly and with less energy
- Simple clean-up—just burn off and brush away

SABER

SABER

# SABER® CONSTRUCTION

- Commercial 304-grade stainless steel that's corrosion-resistant and maintenance-free
- Certified to the highest safety and performance standards
- No-flex lid design ensures years of smooth operation
- Built-in roasting position and tilt storage for warming rack
- Burner boxes, firebox liners and full-size grease trays promote easy cleaning
- Easy assembly with common bolts
- 304-grade stainless-steel emitter and cooking grate



SABER

# THE SABER® EXPERIENCE

- Easy to use; better grilling results
- Reliable start system with an electrode at every burner
- Convenient storage below grill
- Save money – consumes 30% less gas, so every third tank is free
- Easily change fuel sources from propane to natural gas, or for built-in grills, from natural gas to propane, using our patented EZ NG or EZ LP conversion kit (sold separately)
- Streamlined assembly process
- Easy maintenance and cleanup
- Never risk your dinner – flare-ups eliminated
- Wide temperature range allows for versatility when cooking



SABER



## ELITE SERIES

The Elite Series. The name says it all. We added more stainless steel and features to the already great line of SABER® grills and created the Elite Series. The mirror-polished edges and bright annealed stainless steel create the look of luxury and high style. The addition of LED lighting over the control knobs extends cooking ease into the nighttime, and the included rotisserie kit allows for even more versatility in grilling options.

The Elite Series delivers the incredible results you've come to expect from SABER. This is the Elite Series. This is the top of the top of the line.

### SABER® ELITE SSE 330 CART GRILL (LP)

Model:  
**R33SC0717**

Primary Sq. in	Total Sq. in
330	445
Zones	BTUs — HE*
2 burners 304 SS	16,000

\*High Efficiency — SABER® grills use 30% less propane than traditional gas grills.



- All commercial stainless steel construction
- Reliable ignition system with an electrode at every burner
- LED lights above the knobs and an internal halogen light for nighttime grilling
- Mirror-polished edges and handles
- Includes stainless steel rotisserie kit and carrying case
- Single internal halogen light
- Stainless tank tray pulls out for easy access
- Stainless condiment basket
- Includes 3-year warranty marine-grade cover
- Easily converts from liquid propane to natural gas (kit sold separately)
- Product dimensions:  
48 1/2" w x 25" D x 48 13/32" H



SABER® ELITE SSE 500  
CART GRILL (LP)

Model:  
R50SC1417

Primary Sq. in	Total Sq. in
500	675
Zones	BTUs – HE*
3 burners 304 SS	24,000

\*High Efficiency – SABER® grills use 30% less propane than traditional gas grills.



- All commercial stainless steel construction
- Reliable ignition system with an electrode at every burner
- LED lights above the knobs and 2 internal halogen lights for nighttime grilling
- Mirror-polished edges and handles
- Includes stainless steel rotisserie kit and carrying case
- Includes 3-year warranty marine-grade cover

- Enclosed 304 SS cart with heavy-duty 304 SS shelves
- 18,000 BTU dual-control side burner
- Stainless tank tray pulls out for easy access
- Stainless condiment basket
- Stainless steel side-burner grate
- Easily converts from liquid propane to natural gas (kit sold separately)
- Product dimensions: 56 1/2" W x 25" D x 48 13/32" H

SABER® ELITE SSE 670  
CART GRILL (LP)

Model:  
R67SC0917

Primary Sq. in	Total Sq. in
670	895
Zones	BTUs – HE*
4 burners 304 SS	32,000

\*High Efficiency – SABER® grills use 30% less propane than traditional gas grills.



- All commercial stainless steel construction
- Reliable ignition system with an electrode at every burner
- LED lights above the knobs and 2 internal halogen lights for nighttime grilling
- Mirror-polished edges and handles
- Includes stainless steel rotisserie kit and carrying case
- Includes 3-year warranty marine-grade cover.

- Single door and 2 drawers
- 18,000 BTU dual-control side burner
- Stainless tank tray pulls out for easy access
- Stainless condiment basket
- Stainless steel side-burner grate
- Easily converts from liquid propane to natural gas (kit sold separately)
- Product dimensions: 65 3/32" W x 25" D x 48 13/32" H



STAINLESS SERIES

SABER® SS 330  
CART GRILL (LP)

Model:  
R33SC0012

Primary Sq. in	Total Sq. in
330	445
Zones	BTUs – HE*
2 burners 304 SS	16,000

\*High Efficiency – SABER® grills use 30% less propane than traditional gas grills.



- Patented SABER® cooking system
- All stainless steel is 304-grade non-magnetic
- Push-button electronic ignition at each burner
- Heavy-duty 304 SS shelves with die-cast tool holders
- Temperature gauges at cooking-grate level

- Enclosed 304 SS cart
- 304 SS Multiple-position warming rack with storage location
- 4 Heavy-duty nylon locking casters
- Easily converts from liquid propane to natural gas (kit sold separately)
- Product dimensions: 48 1/2" w x 25" D x 48 13/32" H

SABER

SABER



SABER® SS 500  
CART GRILL (LP)

Model:  
R50SC0017

Primary Sq. in	Total Sq. in
500	675
Zones	BTUs – HE*
3 burners 304 SS	24,000

\*High Efficiency – SABER® grills use 30% less propane than traditional gas grills.



- Patented SABER® cooking system
- All stainless steel is 304-grade non-magnetic
- Push-button electronic ignition at each burner
- 18,000 BTU Dual-control side burner for warming side dishes or added high heat for cooking
- 2 Internal halogen lights

- Temperature gauges at cooking-grate level
- 304 SS Multiple-position warming rack with storage location
- 4 Heavy-duty nylon locking casters
- 304 SS Towel bar with die-cast tool holders
- Easily converts from liquid propane to natural gas (kit sold separately)
- Product dimensions:  
56 1/2" W x 25" D x 48 13/32" H

SABER® SS 670  
CART GRILL (LP)

Model:  
R67SC0017

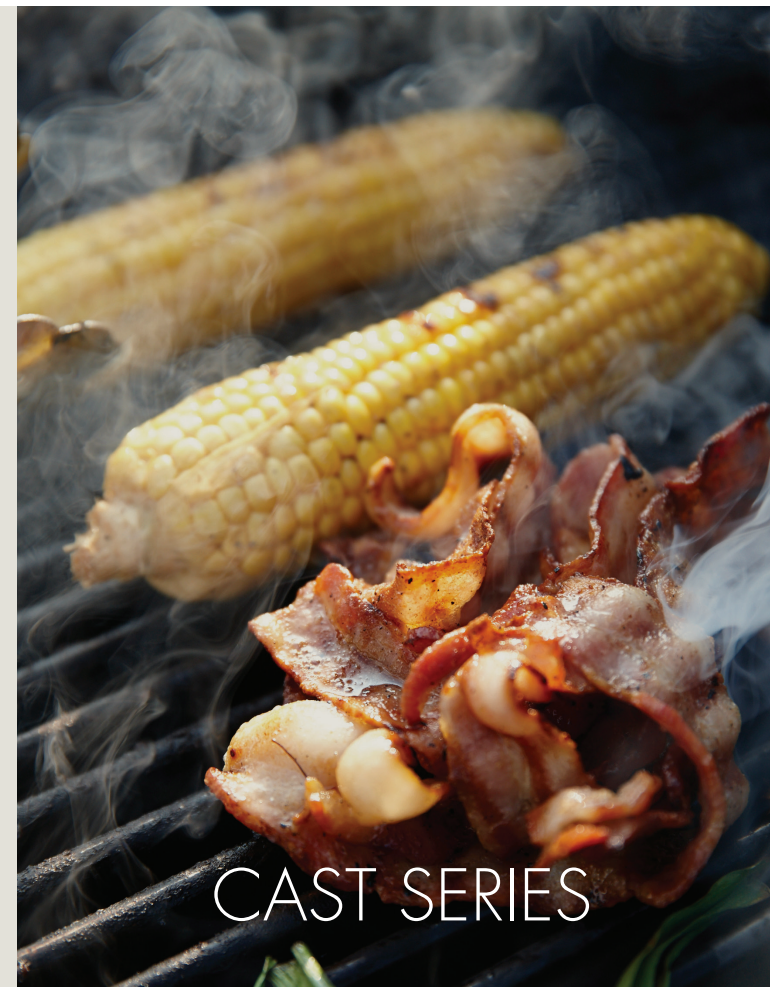
Primary Sq. in	Total Sq. in
670	895
Zones	BTUs – HE*
4 burners 304 SS	32,000

\*High Efficiency – SABER® grills use 30% less propane than traditional gas grills.



- Patented SABER® cooking system
- All stainless steel is 304-grade non-magnetic
- Push-button electronic ignition at each burner
- 18,000 BTU Dual-control side burner for warming side dishes or added high heat for cooking
- 2 Internal halogen lights

- Temperature gauges at cooking-grate level
- 304 SS Multiple-position warming rack with storage location
- 4 Heavy-duty nylon locking casters
- 304 SS Towel bar with die-cast tool holders
- Easily converts from liquid propane to natural gas (kit sold separately)
- Product dimensions:  
65 3/32" W x 25" D x 48 13/32" H



SABER® CAST 500 L  
CART GRILL (LP)

Model:  
R50CC1715

Primary Sq. in	Total Sq. in
500	675
Zones	BTUs – HE*
3 burners 304 SS	24,000

\*High Efficiency – SABER® grills use 30% less propane than traditional gas grills.



- Patented SABER® cooking system
- All stainless steel is 304-grade non-magnetic
- Push-button electronic ignition at each burner
- Lid-mounted temperature gauge
- Enclosed powder-coated cart with heavy-duty 304 SS shelves
- 4 Heavy-duty nylon locking casters

- Multiple-position enamel warming rack with storage location
- Heavy-duty 304 SS shelves with die-cast tool holders
- Easily converts from liquid propane to natural gas (kit sold separately)
- Product dimensions:  
56 1/2" W x 25" D x 48 13/32" H

SABER

SABER

SABER® CAST 500  
CART GRILL (LP)

Model:  
R50CC0317

Primary Sq. in	Total Sq. in
500	675
Zones	BTUs – HE*
3 burners 304 SS	24,000

\*High Efficiency – SABER® grills use 30% less propane than traditional gas grills.



- Patented SABER® cooking system
- All stainless steel is 304-grade non-magnetic
- Push-button electronic ignition at each burner
- Temperature gauges at cooking-grate level
- Side burner for warming side dishes

- Multiple-position enamel warming rack with storage location
- Enclosed powder-coated cart with heavy-duty 304 SS shelves
- 4 Heavy-duty nylon locking casters
- 304 SS Towel bar with die-cast tool holders
- Easily converts from liquid propane to natural gas (kit sold separately)
- Product dimensions:  
56 1/2" W x 25" D x 48 13/32" H

SABER® CAST 330 B  
CART GRILL (LP)

Model:  
R33CC1017

Primary Sq. in	Total Sq. in
330	445
Zones	BTUs – HE*
2 burners 304 SS	16,000

\*High Efficiency – SABER® grills use 30% less propane than traditional gas grills.



- Black enamel lid insert with cast-aluminum endcaps
- Push-button ignition with electrode at each burner
- Heavy-duty powder-coated shelves with tool holders
- Easy assembly—fully enclosed black powder-coated cart

- 4 Heavy-duty nylon locking casters
- Multiple-position enamel warming rack with storage location
- Easily converts from liquid propane to natural gas (kit sold separately)
- All stainless steel is 304-grade non-magnetic
- Product dimensions:  
48 1/2" W x 25" D x 48 13/32" H

SABER® CAST 500 B  
CART GRILL (LP)

Model:  
R50CC0617

Primary Sq. in	Total Sq. in
500	675
Zones	BTUs – HE*
3 burners 304 SS	24,000

\*High Efficiency – SABER® grills use 30% less propane than traditional gas grills.



- Black enamel lid insert with cast-aluminum endcaps
- Push-button ignition with electrode at each burner
- Heavy-duty powder-coated shelves with tool holders
- Easy assembly—fully enclosed black powder-coated cart

- 4 Heavy-duty nylon locking casters
- Multiple-position enamel warming rack with storage location
- Easily converts from liquid propane to natural gas (kit sold separately)
- All stainless steel is 304-grade non-magnetic
- Product dimensions:  
56 1/2" W x 25" D x 48 13/32" H

SABER® CAST 670 B  
CART GRILL (LP)

Model:  
R67CC1117

Primary Sq. in	Total Sq. in
670	890
Zones	BTUs – HE*
4 burners 304 SS	32,000

\*High Efficiency – SABER® grills use 30% less propane than traditional gas grills.



- Black enamel lid insert with cast-aluminum endcaps
- Push-button ignition with electrode at each burner
- Heavy-duty SS 304 shelves with die-cast tool holders
- Easy assembly—fully enclosed black powder-coated cart
- Side burner for warming side dishes

- 4 Heavy-duty nylon locking casters
- 304 SS Towel bar with die-cast tool holders
- Multiple-position enamel warming rack with storage location
- Easily converts from liquid propane to natural gas (kit sold separately)
- All stainless steel is 304-grade non-magnetic
- Product dimensions:  
65 3/32" W x 25" D x 48 13/32" H

SABER

SABER



# BUILT-IN GRILLS



## ELITE SERIES

SABER® ELITE SSE 500 BUILT-IN GRILL (NG)



Model:  
R50SB1517

Primary Sq. in	Total Sq. in
500	675
Zones	BTUs – HE*
3 burners 304 SS	24,000

\*High Efficiency – SABER® grills use 30% less propane than traditional gas grills.



- All 304-grade commercial stainless steel construction
- Reliable ignition system with an electrode at every burner
- LED lights above the knobs and 2 internal halogen lights for nighttime grilling
- Mirror-polished edges and handles
- Includes stainless steel rotisserie kit and carrying case
- Includes 3-year warranty marine-grade cover.
- Includes appliance-style natural gas regulator
- SS 304 multiple-position warming rack with storage location
- High-strength mounting flanges
- Easily converts from natural gas to liquid propane (kit sold separately)
- Cutout dimensions:  
28 1/8" W x 22" D x 9" H
- Product dimensions:  
31 5/8" W x 26 1/2" D x 21 5/8" H

SABER® ELITE SSE 670 BUILT-IN GRILL (NG)



Model:  
R67SB1017

Primary Sq. in	Total Sq. in
670	895
Zones	BTUs – HE*
4 burners 304 SS	32,000

\*High Efficiency – SABER® grills use 30% less propane than traditional gas grills.



- All 304-grade commercial stainless steel construction
- Reliable ignition system with an electrode at every burner
- LED lights above the knobs and 2 internal halogen lights for nighttime grilling
- Mirror-polished edges and handles
- Includes stainless steel rotisserie kit and carrying case
- Includes 3-year warranty marine-grade cover.
- Includes appliance-style natural gas regulator
- SS 304 Multiple-position warming rack with storage location
- High-strength mounting flanges
- Easily converts from natural gas to liquid propane (kit sold separately)
- Cutout dimensions:  
37 1/8" W x 22" D x 9" H
- Product dimensions:  
40 3/16" W x 26 1/2" D x 21 5/8" H

SABER®

SABER® SS 500 BUILT-IN GRILL (NG)

Model:  
R50SB0417

Primary Sq. in	Total Sq. in
500	675
Zones	BTUs – HE*
3 burners 304 SS	24,000

\*High Efficiency – SABER® grills use 30% less propane than traditional gas grills.



- Patented SABER® cooking system
- All stainless steel is 304-grade non-magnetic
- Push-button electronic ignition at each burner
- Cooking-grate-level temperature gauges
- Cutout dimensions:  
28 1/8" W x 22" D x 9" H
- Product dimensions:  
31 5/8" W x 26 1/2" D x 21 5/8" H

- 304 SS Multiple-position warming rack with storage location
- 2 Internal halogen lights
- Sold as natural gas
- Appliance-style natural gas regulator included

SABER® SS 670 BUILT-IN GRILL (NG)

Model:  
R67SB0317

Primary Sq. in	Total Sq. in
670	895
Zones	BTUs – HE*
4 burners 304 SS	32,000

\*High Efficiency – SABER® grills use 30% less propane than traditional gas grills.



- Patented SABER® cooking system
- All stainless steel is 304-grade non-magnetic
- Push-button electronic ignition at each burner
- Cooking-grate-level temperature gauges
- Cutout dimensions:  
37 1/8" W x 22" D x 9" H
- Product dimensions:  
40 3/16" W x 26 1/2" D x 21 5/8" H

- 304 SS Multiple-position warming rack with storage location
- 2 Internal halogen lights
- Sold as natural gas
- Appliance-style natural gas regulator included

SABER® ELITE SSE DUAL-BURNER BUILT-IN SIDE BURNER

Model:  
K00SB5317



- LED lights over the knobs for nighttime grilling
- Integrated lid design for superior weather-resistance
- Stainless steel grate
- 2 Individually controlled tube burners for low or high heat up to 18,000 BTUs
- 304 SS Construction

- Great for wok cooking, skillet dishes, boiling seafood or frying fish
- Easily converts from natural gas to liquid propane (kit sold separately)
- Cut-out dimensions:  
11 7/8" W x 20 3/4" D x 8 11/16" H
- Product dimensions:  
15 1/4" W x 26 1/4" D x 11 1/2" H

SABER® SS DUAL-BURNER BUILT-IN SIDE BURNER

Model:  
K00SB1817



- 2 Individually controlled tube burners for low or high heat up to 18,000 BTUs
- 304 SS Construction
- Reversible heavy-duty cast-iron grate for flat-top or round surface
- Great for wok cooking, skillet dishes, boiling seafood or frying fish

- Easily converts from natural gas to liquid propane (kit sold separately)
- Cutout dimensions:  
11 7/8" W x 20 3/4" D x 8 11/16" H
- Product dimensions:  
14 15/16" W x 26 1/8" D x 9 1/4" H

SABER

SABER



OUTDOOR KITCHEN  
COMPONENTS



SABER® 4.1 CU. FT. OUTDOOR  
UL-RATED STAINLESS STEEL  
REFRIGERATOR

Model:  
K00AA3314



- 304 SS Reversible door
- Adjustable, removable shelves
- Adjustable controls
- UL-Approved for outdoor use
- Front venting for under-counter installation
- Cutout dimensions:  
21 1/4" W x 24" D x 33 5/8" H
- Product dimensions:  
20 1/2" W x 22 5/8" D x 33 1/16" H

SABER® TRIM KIT FOR  
4.1 CU. FT. REFRIGERATOR

Model:  
K00AA3514



- 304 SS Construction
- Trim matches other accessories
- Improves the installation appearance
- For use with SABER® 4.1 cubic foot stainless steel refrigerator
- Cutout dimensions:  
21 1/4" W x 13/16" D x 33 5/8" H
- Product dimensions:  
23 1/8" W x 1 3/4" D x 34 11/16" H



SABER®



## SABER® DROP-IN ICE CHEST

Model:  
K00AA3414



- 304 SS Construction
- Adds an insulated storage space
- Store ice and keep beverages cool
- Drops into your countertop
- Drain plug for easy cleaning
- Frame construction adds strength to the door
- Cutout dimensions:  
23" W x 17 1/16" D x 12" H
- Product dimensions:  
24 1/16" W x 18 1/4" D x 13" H

## SABER® 26" X 19" SINGLE-ACCESS DOOR

Model:  
K00AA2614



- 304 SS Construction
- Adds useful storage space
- Door provides access to the island
- Cutout dimensions:  
17 1/8" W x 15/16" D x 24 1/16" H
- Product dimensions:  
18 15/16" W x 1 7/8" D x 25 15/16" H

## SABER® 19" X 26" SINGLE-ACCESS DOOR

Model:  
K00AA2514



- 304 SS Construction
- Adds useful storage space
- Door provides access to the island
- Cutout dimensions:  
24 1/16" W x 15/16" D x 17 1/8" H
- Product dimensions:  
25 15/16" W x 1 7/8" D x 18 7/8" H

## SABER® 24" X 31" DOUBLE-ACCESS DOORS

Model:  
K00AA2314



- 304 SS Construction
- Adds useful storage space
- Door provides access to the island
- Paper-towel holder inside door
- Cutout dimensions:  
26 1/4" W x 15/16" D x 20 1/4" H
- Product dimensions:  
30 3/16" W x 1 7/8" D x 24 3/16" H

## SABER® 24" X 39" DOUBLE-ACCESS DOORS

Model:  
K00AA2414



- 304 SS Construction
- Adds useful storage space
- Door provides access to the island
- Paper-towel holder inside door
- Cutout dimensions:  
34 1/4" W x 15/16" D x 20 1/4" H
- Product dimensions:  
38 1/16" W x 1 7/8" D x 24 3/16" H

## SABER® PAPER-TOWEL HOLDER

Model:  
K00AA3014



- 304 SS Construction
- Mounts either horizontally or vertically
- Convenient access to paper towels
- Frame construction adds strength to the door
- Cutout dimensions:  
13 1/8" W x 7 1/8" D x 8" H
- Product dimensions:  
14 13/16" W x 8 1/16" D x 9 5/8" H

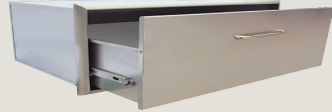
SABER

SABER



SABER® 24"  
SINGLE STORAGE DRAWER

Model:  
K00AA2714



- 304 SS Construction
- Adds useful storage space
- Drawer for storage of BBQ tools and accessories
- Heavy-duty drawer glides
- 304 SS Fully enclosed cabinet
- Cutout dimensions:  
23 3/16" W x 19 9/16" D x 3 3/4" H
- Product dimensions:  
24 13/16" W x 20 7/8" D x 5 7/16" H

SABER® TWO-DRAWER  
CABINET

Model:  
K00AA1914



- 304 SS Construction
- Adds useful storage space
- Drawers for storage of BBQ tools and accessories
- Heavy-duty drawer glides
- 304 SS Fully enclosed cabinet
- Cutout dimensions:  
14 3/16" W x 17 3/16" D x 20 1/4" H
- Product dimensions:  
15 15/16" W x 18 1/8" D x 21 15/16" H

SABER® TRIPLE-DRAWER  
CABINET

Model:  
K00AA2814



- 304 SS Construction
- Adds useful storage space
- Drawers for storage of BBQ tools and accessories
- Heavy-duty drawer glides
- 304 SS Fully enclosed cabinet
- Cutout dimensions:  
16 5/8" W x 17 3/16" D x 24 1/16" H
- Product dimensions:  
18 1/4" W x 18 1/8" D x 25 9/16" H

SABER® DOUBLE-DRAWER-AND-  
DOOR COMBO

Model:  
K00AA3114



- 304 SS Construction
- Adds useful storage space
- Door provides access to the island
- Drawers for storage of BBQ tools and accessories
- 304 SS Fully enclosed cabinet
- Cutout dimensions:  
28 11/16" W x 17 3/16" D x 20 1/4" H
- Product dimensions:  
30 9/16" W x 18 1/4" D x 21 15/16" H

SABER® TRIPLE-DRAWER-AND-  
DOOR COMBO

Model:  
K00AA3214



- 304 SS Construction
- Adds useful storage space
- Door provides access to the island
- Drawers for storage of BBQ tools and accessories
- 304 SS Fully enclosed cabinet
- Cutout dimensions:  
33 11/16" W x 17 3/16" D x 24" H
- Product dimensions:  
35 1/2" W x 18 1/16" D x 25 3/4" H

SABER® LP TANK DRAWER

Model:  
K00AA2914



- 304 SS Construction
- Adds propane-tank storage space
- Heavy-duty drawer glides
- Frame construction adds strength to the door
- Cutout dimensions:  
13 1/2" W x 16" D x 20 1/8" H
- Product dimensions:  
15 3/8" W x 16 15/16" D x 21 7/8" H

SABER

SABER

# OUTDOOR KITCHENS



Model:  
**150LK2015**  
SILVER VEIN TOP/BASE COLOR

Model:  
**150LK2315**  
COPPER VEIN TOP/  
SANDY SHORE BASE COLOR



Model:  
**150LK2115**  
COPPER VEIN TOP/  
SANDY SHORE BASE COLOR

Model:  
**150LK2215**  
SILVER VEIN TOP/BASE COLOR



## SABER® EZ OUTDOOR KITCHEN – 500 R SERIES:

- R50SB0412 SS 500 Built-in gas grill
- K00SB1814 Dual side burner built-in
- K00AA3314 Stainless 4.1 cu. ft. outdoor refrigerator
- K00AA3514 Refrigerator 4.1 cu. ft. trim kit
- K00AA3114 Double drawer-and-door combo
- K00AA3014 Paper-towel holder
- Island made in the USA

## SPECIFICATIONS:

- Buy, build and barbecue in one day
- All-aluminum construction for superior UV and corrosion resistance
- Only 29 common 5/16-18 stainless bolts used for assembly
- Pre-wired with GFCI outlet
- Easy access for gas connections and required venting is in place for NG or LP usage (LP kit sold separately)
- Overall dimensions: 82" W x 29" D x 48 3/5" H (counter = 36" H)
- Shipping dimensions: 84" W x 33 3/4" D x 52 3/4" H (weight = 516 lbs with components)

## SABER® EZ OUTDOOR KITCHEN – 500 I SERIES:

- R50SB0412 SS 500 Built-in gas grill
- K00SB1814 Dual side burner built-in
- K00AA3414 Drop-in ice chest
- K00AA2314 24" x 31" Double-access door
- Island made in the USA

## SPECIFICATIONS:

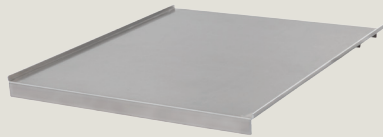
- Buy, build and barbecue in one day
- All-aluminum construction for superior UV and corrosion resistance
- Only 24 common 5/16-18 stainless bolts used for assembly
- Pre-wired with GFCI outlet
- Easy access for gas connections and required venting is in place for NG or LP usage (LP kit sold separately)
- Overall dimensions: 82" W x 29" D x 48 3/5" H (counter = 36" H)
- Shipping dimensions: 84" W x 33 3/4" D x 52 3/4" H (weight = 410 lbs with components)

SABER®



SABER® 500 I-SERIES RIGHT  
FLOOR PANEL

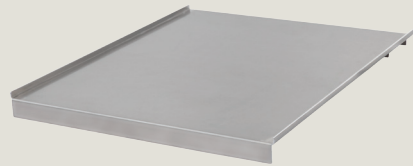
Model:  
K00AA4915



- Adds internal storage space to the kitchen
- High-strength aluminum panel
- Easily installs on SABER® EZ Outdoor Kitchens

SABER® 500 I-SERIES LEFT  
FLOOR PANEL

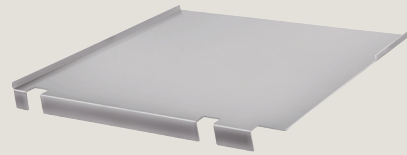
Model:  
K00AA4815



- Adds internal storage space to the kitchen
- High-strength aluminum panel
- Easily installs on SABER® EZ Outdoor Kitchens

SABER® 500 R-SERIES LEFT  
FLOOR PANEL

Model:  
K00AA5015



- Adds internal storage space to the kitchen
- High-strength aluminum panel
- Easily installs on SABER® EZ Outdoor Kitchens

SABER® FULL-SIZE EZ OUTDOOR  
KITCHEN 500-SIZE COVER

Model:  
K50ZZ2516



- Custom fit—designed specifically for SABER® EZ Outdoor Kitchen 500 Built-in
- Black marine-grade solution-dyed polyester resists fading, mildew, cold-cracking and repels water
- Handle for easy removal and hanging hook for easy storage during grilling
- 3-Year warranty
- Cover dimensions:  
82.7" W x 31.3" D x 48.5" H

SABER® DUAL SIDE BURNER COPPER  
VEIN ALUMINUM COVER

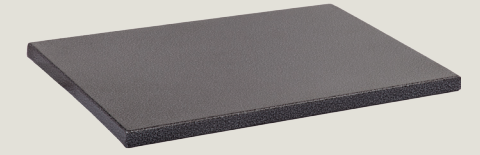
Model:  
K00AA5216



- Creates a color-matched work space on the side burner
- High-strength aluminum panel
- Easily installs on SABER® EZ Outdoor Kitchens

SABER® DUAL SIDE BURNER SILVER  
VEIN ALUMINUM COVER

Model:  
K00AA5116



- Creates a color-matched work space on the side burner
- High-strength aluminum panel
- Easily installs on SABER® EZ Outdoor Kitchens

## EZ OUTDOOR KITCHEN ACCESSORIES

SABER

SABER

# ACCESSORIES



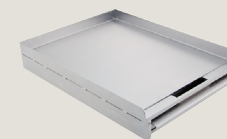
## SABER® EZ TEMP™ DIGITAL MEAT THERMOMETER A00AA3814

- 5-Second quick-response time provides fast, accurate results
- 7 Meat types and doneness levels with audible USER-defined temperature alarm
- Easy-to-read backlit LCD readout
- Wide temperature range 32°F/0°C to 392°F/200°C
- Auto and manual on/off button
- 1-Year warranty



## SABER® EZ STAINLESS STEEL GRIDDLE A00AA1313

- Constructed with heavy-duty stainless steel with bracing to prevent flexing
- EZ clean grease tray to simply remove grease when finished
- Restaurant-style cooking
- Measures 12 1/4" W x 16 1/4" D x 2 3/4" H
- 1-Year warranty



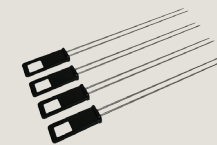
## SABER® STAINLESS STEEL POLISH 16 OZ. SPRAYER A00YY0312

- Leaves a deep, glossy sheen without the need for hard rubbing
- Streak-free anti-smear formula
- Minimize grease and water-spatter marks and fingerprint resistant
- Works on indoor stainless steel appliances
- Non-hazardous



## SABER® STAINLESS STEEL DUAL SKEWERS A00AA0012

- Set of 4 skewers
- Dual-piercing 304 SS tines keep food from falling off or rotating
- 14" long tines keep hands safely away from the high heat
- Dishwasher safe
- 1-Year warranty



## SABER® 3-PIECE PREMIUM TOOL SET A00AA0112

- Includes a spatula, fork and locking tongs
- Constructed with premium stainless steel
- Soft-grip handles with tool holders on all handles
- Dishwasher safe
- 1-Year warranty



## SABER® WIDE HEAD SPATULA A00AA1113

- Extra-large 7" spatula
- Constructed with premium stainless steel
- Soft-grip handle with tool holder
- Dishwasher safe
- 1-Year warranty



SABER®



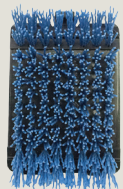
**SABER® COOL TOUCH GRILL BRUSH**  
A00YY1515

- Abrasive bristles last 5-times longer than standard wire bristles
- Clean before or after cooking, making sure grill is cool to the touch
- Removable bristle head for easy cleaning or replacement



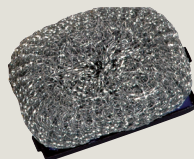
**SABER® COOL-TOUCH GRILL BRUSH**  
**NYLON REPLACEMENT HEAD**  
A00YY1615

- Ceramic-infused nylon bristles last 5-times longer and clean safer
- For use with Cool-Touch brushes
- Dishwasher safe



**SABER® BRUSH REPLACEMENT HEADS**  
**SS MESH**  
A00YY0712

- 304 SS Replacement heads for SABER® grill brush
- Dishwasher safe
- Pack of 2



**SABER® EZ NATURAL GAS CONVERSION KIT**  
A00AA0412

- Easily, quickly and safely convert your SABER® grill from liquid propane to natural gas
- Only fits models ending in "16" or lower
- Includes appliance-style natural gas regulator, 10-foot NG hose, die-cast knobs for conversion and LP orifice-removal tool



**SABER® EZ LP CONVERSION KIT**  
A00AA0912

- Easily, quickly and safely convert your SABER® built-in grill from natural gas to liquid propane
- Only fits models ending in "16" or lower
- Includes LP gas regulator and hose, tank-retention hook, die-cast knobs for conversion and LP orifice-installation tool



**SABER® EZ DUAL-OUTLET LP CONVERSION KIT**  
K00AA4615

- Easily, quickly and safely convert your SABER® built-in grill from natural gas to liquid propane
- Only fits models ending in "16" or lower
- Includes LP gas regulator and hose, tank-retention hook, die-cast knobs for conversion and LP orifice-installation tool



**SABER® EZ NATURAL GAS CONVERSION KIT**  
A00AA5417

- Easily, quickly and safely convert your SABER® grill from liquid propane to natural gas
- Only fits models ending in "17" or higher
- Includes appliance-style natural gas regulator, 10-foot hose, 8-inch hose, stop pins and orifice tool



**SABER® EZ LP CONVERSION KIT**  
A00AA5517

- Easily, quickly and safely convert your SABER® grill from natural gas to liquid propane
- Only fits models ending in "17" or higher
- Includes LP gas regulator and hose, tank retention hook, LP orifices and orifice tool



**SABER® EZ DUAL-OUTLET LP CONVERSION KIT**  
K00AA5617

- Easily, quickly and safely convert your SABER® grill from natural gas to liquid propane
- Only fits models ending in "17" or higher
- Includes LP gas regulator and dual outlet hose assembly, tank retention hook, LP orifices and orifice tool



**SABER® STAINLESS**  
**STEEL ROTISSERIE KIT WITH CASE**  
A00AA1012

- All 304 stainless steel construction and hardware
- Heavy-duty, stainless steel motor
- Fits all SABER® grills
- Includes heavy-duty motor, two 304 SS meat forks, roller-bearing rod support, mounting brackets and a storage case
- 1-Year warranty



**SABER® STAINLESS STEEL**  
**ROTISSERIE SPIT ROD**

- Constructed with 304 stainless steel
- 20-lb capacity



A33AA0212

- Fits 330 Grills

A50AA0212

- Fits 500 Grills

A67AA0212

- Fits 670 Grills



COVERS



**SABER® 330 GRILL COVER**  
A33ZZ0112

- Black marine-grade solution-dyed polyester resists fading, mildew, cold-cracking and repels water
- Handle for easy removal and hanging hook for easy storage while grilling
- 3-Year warranty
- Cover dimensions: 49 1/2" W x 26" D x 48" H



**SABER® 500 GRILL COVER**  
A50ZZ0112

- Black marine-grade solution-dyed polyester resists fading, mildew, cold-cracking and repels water
- Handle for easy removal and hanging hook for easy storage while grilling
- 3-Year warranty
- Cover dimensions: 57 1/2" W x 26" D x 48" H



**SABER® 670 GRILL COVER**  
A67ZZ0112

- Black marine-grade solution-dyed polyester resists fading, mildew, cold-cracking and repels water
- Handle for easy removal and hanging hook for easy storage while grilling
- 3-Year warranty
- Cover dimensions: 66 3/32" W x 26" D x 48" H



**SABER® 500 BUILT-IN GRILL COVER**  
A50ZZ0512

- Black marine-grade solution-dyed polyester resists fading, mildew, cold-cracking and repels water
- Handle for easy removal and hanging hook for easy storage while grilling
- 3-Year warranty
- Cover dimensions: 36 1/2" W x 26" D x 21 5/8" H



**SABER® 670 BUILT-IN GRILL COVER**  
A67ZZ0412

- Black marine-grade solution-dyed polyester resists fading, mildew, cold-cracking and repels water
- Handle for easy removal and hanging hook for easy storage while grilling
- 3-Year warranty
- Cover dimensions: 36 3/4" W x 26" D x 21 5/8" H



**SABER® DUAL SIDE-BURNER COVER**  
A00ZZ3915

- Custom fit—designed specifically for SABER® Grill Dual-Burner Built-in Side Burners
- Black marine-grade solution-dyed polyester resists fading, mildew, cold-cracking and repels water
- Handle for easy removal and hanging hook for easy storage while grilling
- 3-Year warranty
- Cover dimensions: 27 1/4" W x 20 1/4" D x 10 1/2" H



**SABER®**



# SABER<sup>®</sup>

sabergrills.com

p: 877.967.2237 | f: 855.858.4876 | P.O. Box 1977 | Columbus, GA | 31902

[sabergrills.com/better-barbeque-experience](http://sabergrills.com/better-barbeque-experience)