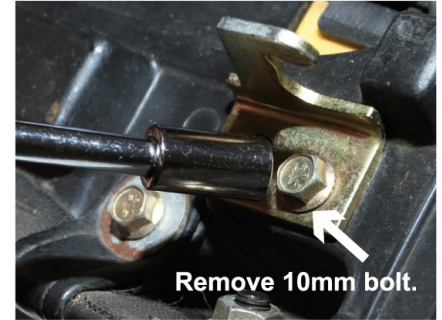


**TRIUMPH SPRINT 1999-2004
SARGENT WORLD SPORT PERFORMANCE SEAT
INSTALLATION GUIDE**

Thank you for purchasing a Sargent World Sport Performance Seat. Please follow this guide to remove the OEM mounting brackets from your existing seat and install them on your new Sargent seat.

This procedure will only take a few minutes to perform and requires no special tools or parts.



Note

Take special care in the handling of the seat during this procedure by placing the top of the seat on a padded surface. Also avoid stripping, over tightening, or cross threading the bolts during this process.



Installation

Remove the 10mm bolt and lift the bracket off its alignment guide. Please note that the brackets are specific to the left and right sides of the seat pan.

Install the mounting bracket by finding the alignment guide on the Sargent seat pan. Place the OEM bracket over the guide, insert the 10mm bolt and tighten. Do not over tighten and strip the threads.

