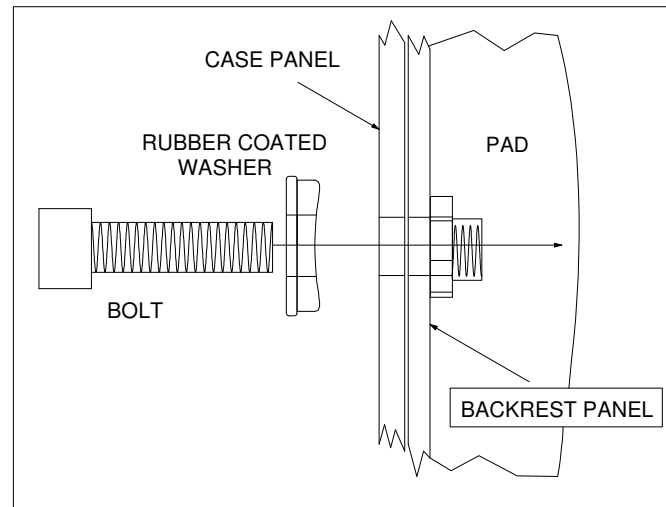


HONDA ST1300 TOP CASE BACKREST

PART # BR-2051

INSTRUCTIONS AND TEMPLATE



1. CUT THE TEMPLATE OUT AND TAPE IT IN PLACE, CENTERING IT ON THE LID.

2. ONCE YOU ARE CERTAIN THAT THE TEMPLATE IS POSITIONED CORRECTLY, MARK THE FOUR HOLES ON THE LID.

3. REMOVE THE TEMPLATE AND USE A 1/4" BIT TO DRILL THE FOUR HOLES IN THE TOP CASE LID.

4. INSTALL THE FASTNERS PROVIDED THROUGH THE TOP CASE'S LID AND INTO THE TREADED HOLES ON THE BACKREST. USE THE RUBBER COATED WASHER AS INDICATED.

SARGENT CYCLE PRODUCTS
EMAIL: INFO@SARGENTCYCLE.COM
PH. 1-800-749-7328

PLACE THIS EDGE FLUSH WITH THE BOTTOM EDGE OF TOP CASE LID.